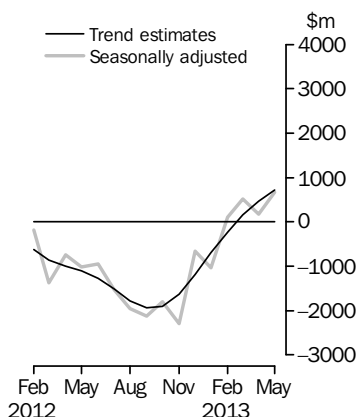


INTERNATIONAL TRADE IN GOODS AND SERVICES

AUSTRALIA

EMBARGO: 11.30AM (CANBERRA TIME) WED 3 JUL 2013

Balance on Goods and Services



KEY FIGURES

	Mar 2013	Apr 2013	May 2013	Apr 13 to May 13 %
	\$m	\$m	\$m	change
BALANCE ON GOODS AND SERVICES				
Trend estimates	159	472	721	53
Seasonally adjusted	508	171	670	292
CREDITS (Exports of goods and services)				
Trend estimates	25 615	25 859	26 065	1
Seasonally adjusted	25 684	25 530	26 444	4
DEBITS (Imports of goods and services)				
Trend estimates	25 456	25 387	25 344	—
Seasonally adjusted	25 176	25 360	25 774	2

— nil or rounded to zero (including null cells)

KEY POINTS

BALANCE ON GOODS AND SERVICES

- In trend terms, the *balance on goods and services* was a surplus of \$721m in May 2013, an increase of \$249m (53%) on the surplus in April 2013.
- In seasonally adjusted terms, the *balance on goods and services* was a surplus of \$670m in May 2013, an increase of \$499m (292%) on the surplus in April 2013.

CREDITS (EXPORTS OF GOODS AND SERVICES)

- In seasonally adjusted terms, *goods and services credits* rose \$914m (4%) to \$26,444m. *Non-rural goods* rose \$682m (4%), *non-monetary gold* rose \$135m (10%) and *rural goods* rose \$58m (2%). *Net exports of goods under merchanting* remained steady at \$12m. *Services credits* rose \$39m (1%).

DEBITS (IMPORTS OF GOODS AND SERVICES)

- In seasonally adjusted terms, *goods and services debits* rose \$414m (2%) to \$25,774m. *Consumption goods* rose \$357m (7%) and *intermediate and other merchandise goods* rose \$351m (4%). *Capital goods* fell \$290m (5%) and *non-monetary gold* fell \$15m (3%). *Services debits* rose \$10m.

INQUIRIES

For further information contact Val Tot on Canberra (02) 6252 5540 for Goods, and Lauren Binns on Hobart (03) 6222 5926 for Services.

NOTES

FORTHCOMING ISSUES

ISSUE	RELEASE DATE
June 2013	6 August 2013
July 2013	5 September 2013
August 2013	2 October 2013
September 2013	6 November 2013
October 2013	5 December 2013
November 2013	7 January 2014



REVISIONS

Revisions have been made to incorporate the latest data relating to international trade in goods and services since the last issue of this publication:

- on an international merchandise trade basis, exports and imports have been revised back to November 2012
- on a balance of payments basis, goods credits and debits have been revised back to October 2012, and services credits and debits back to July 2012.

Table 17 summarises revisions to goods and services on a balance of payments basis, in original current price terms, since the last issue of this publication. In original terms, the revisions have increased the deficit on goods and services for the ten months to April 2013 by \$360m.

CHANGES IN THIS ISSUE

CHANGES TO LABEL FOR TREATMENT CODE 821

From this issue the label for treatment code 821 has been changed from 'Goods imported under the Texco scheme' to 'Goods specified in a tradex order imported by the holder of the tradex order'.

VALUE ADJUSTMENTS

Adjustments have been made to the value of the 'capital goods n.e.s.' component in the balance of payments series.

See page 4 – *Value adjustments* for details.

RELATED RELEASES

See page 5 – *Related releases* for details.

Brian Pink
Australian Statistician

CONTENTS

	<i>page</i>
Value adjustments	4
Related releases	5
Time series data	6
ANALYSIS	
Analysis and comments	8
TABLES	
INTERNATIONAL TRADE IN GOODS AND SERVICES – ON A BALANCE OF PAYMENTS BASIS	
1 Goods and services, summary, seasonally adjusted and trend estimates	14
2 Goods and services, summary, original	15
3 Goods credits, original	16
4 Goods debits, original	17
5 Goods credits, seasonally adjusted	18
6 Goods debits, seasonally adjusted	19
7 Goods credits, trend estimates	20
8 Goods debits, trend estimates	21
9 Services, summary, original	22
10 Services, summary, seasonally adjusted and trend estimates	23
11 Services, original, quarterly	24
INTERNATIONAL MERCHANDISE TRADE – ON AN INTERNATIONAL MERCHANDISE TRADE BASIS	
12 International merchandise exports, by commodity	25
13 International merchandise imports, by commodity	28
14 International merchandise trade, by country and country groups	31
15 International merchandise trade, by state	32
OTHER TABLES	
16 Period average exchange rates per Australian dollar	33
17 Summary of revisions, goods and services, original	34
OTHER INFORMATION	
Explanatory notes	35
Appendix – Related articles	41

VALUE ADJUSTMENTS

VALUE ADJUSTMENTS

International merchandise trade exports data presented in tables 12–15 of this publication are based on information provided by exporters to the *Australian Customs and Border Protection Service* (Customs and Border Protection). At the time of initial reporting to Customs and Border Protection, quantity and unit price information might be estimated for commodities such as iron ore and coal. Final quantity and/or unit price information is updated progressively in merchandise trade data as exporters revise the information provided to Customs and Border Protection. When additional information on quantity and/or unit price for these commodities is available, the ABS may adjust the balance of payments series in current price, original terms to reflect actual transaction values.

In most instances, transfer of ownership occurs when goods cross the customs frontier. In certain circumstances the ownership of large value capital expenditure items can occur prior to the items crossing the customs frontier. The ABS may adjust the relevant balance of payments series to record the timing when transfer of ownership was effected.

Goods credits

No adjustments have been applied to the 'metal ores and minerals' and 'coal, coke and briquettes' components for May 2013. All previous adjustments have been removed.

Goods debits

Capital expenditure (in original terms)

- the 'capital goods n.e.s.' component includes an estimate of expenditure on capital goods that have changed ownership but have not yet crossed the customs frontier.

RELATED RELEASES

INFORMATION PAPER:
PROPOSED
IMPLEMENTATION OF THE
NEW INTERNATIONAL
STANDARD FOR
INTERNATIONAL
MERCHANDISE TRADE
STATISTICS, 2013

The *Information Paper: Proposed Implementation of the New International Standard for International Merchandise Trade Statistics, 2013* (cat. no. 5368.0.55.020) will be released on 6 August 2013 to explain the key conceptual changes and new recommendations included in *International Merchandise Trade Statistics: Concepts and Definitions 2010* (IMTS 2010) in terms of Australia's statistics. The ABS position on each of the key conceptual changes will be presented. Users of import and export statistics on an international merchandise trade basis are encouraged to provide feedback on the ABS position and comments on how the changes may affect the usefulness of the statistics.

The current conceptual framework which underpins Australia's export and import statistics on an international merchandise trade basis is consistent with the international standard set out in the United Nations (UN) publication *International Merchandise Trade Statistics: Concepts and Definitions Series M, No. 52, Rev. 2*.

The UN has updated the international standard for compiling international merchandise trade statistics. The new standard *IMTS 2010* is more consistent with *System of National Accounts 2008/ Balance of Payments and International Investment Position Manual sixth edition* which is the overarching framework for the compilation of macroeconomic statistics by the ABS.

TIME SERIES DATA

TIME SERIES DATA

Tables 1 to 16 of this publication are available free on the ABS website <www.abs.gov.au> from the 'Downloads' tab of this issue with longer time series. A number of these tables present more detailed breakdowns than included in the publication. A number of additional tables are available free on the ABS website.

Tables with more detailed breakdowns:

11a Services credits: Original – Quarter¹

11b Services debits: Original – Quarter¹

12b Merchandise exports by Standard International Trade Classification (3 digit), FOB Value

13b Merchandise imports by Standard International Trade Classification (3 digit), Customs Value

14a Merchandise exports, Country and Country Groups, FOB Value

14b Merchandise imports, Country and Country Groups, Customs Value

Additional tables:

31 Merchandise exports by Broad Economic Category (BEC)

32a Merchandise exports, Industry (ANZSIC 2006), FOB Value – from July 2005 onward

32b Merchandise exports, Industry (ANZSIC 1993), FOB Value – from January 1988 to June 2009

33 Merchandise imports by Broad Economic Category (BEC)

34 Merchandise imports by Balance of Payments Broad Economic Category (BoPBEC)

35a Merchandise imports, Industry (ANZSIC 2006), Customs Value – from July 2005 onward

35b Merchandise imports, Industry (ANZSIC 1993), Customs Value – from January 1988 to June 2009

36 Merchandise exports, State by Country and Country Groups

37 Merchandise imports, State by Country and Country Groups

91 Monthly seasonal adjustment factors and forward factors for 12 months.

¹ With a one quarter lag for the more detailed breakdowns.

TIME SERIES DATA *continued*

TRADE IN SERVICES DATA CUBES

Trade in services data cubes are usually updated on an annual basis. Calendar year (cat. no. 5368.0.55.004) statistics are updated following the March issue of this publication and financial year (cat. no. 5368.0.55.003) statistics are updated following the September issue of this publication.

The following tables were included in the calendar and financial year data cubes:

- 1 International trade in services, credits, state by year
- 2 International trade in services, credits, year by state
- 3 International trade in services, debits, state by year
- 4 International trade in services, debits, year by state
- 5 International trade in services, credits, year by country and service
- 6 International trade in services, credits, service by year and by country
- 7 International trade in services, debits, year by country and service
- 8 International trade in services, debits, service by year and by country
- 9 International trade in services, credits, year by country and travel service
- 10 International trade in services, debits, year by country and travel service
- 11 International trade in services, credits, education related travel, by educational sector, by type of expenditure by year.

ANALYSIS AND COMMENTS

BALANCE ON GOODS AND SERVICES

In trend terms, the balance on goods and services was a surplus of \$721m in May 2013, an increase of \$249m (53%) on the surplus in April 2013.

In seasonally adjusted terms, the balance on goods and services was a surplus of \$670m in May 2013, an increase of \$499m (292%) on the surplus in April 2013.

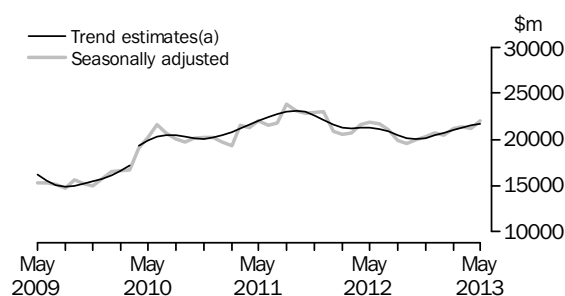
EXPORTS OF GOODS AND SERVICES

Between April and May 2013, the trend estimate of goods and services credits rose \$206m (1%) to \$26,065m.

In seasonally adjusted terms, goods and services credits rose \$914m (4%) to \$26,444m. Non-rural goods rose \$682m (4%), non-monetary gold rose \$135m (10%) and rural goods rose \$58m (2%). Net exports of goods under merchanting remained steady at \$12m. Services credits rose \$39m (1%).

Exports of goods

GOODS CREDITS



(a) A Trend break has been applied to April 2010

RURAL GOODS

In trend terms, exports of rural goods rose \$44m (1%) to \$3,159m.

In seasonally adjusted terms, exports of rural goods rose \$58m (2%) to \$3,203m.

The main components contributing to the rise in seasonally adjusted estimates were:

- cereal grains and cereal preparations, up \$78m (10%)
- meat and meat preparations, up \$22m (3%).

Partly offsetting these rises was the other rural component, down \$47m (3%).

NON-RURAL GOODS

In trend terms, exports of non-rural goods rose \$129m (1%) to \$17,192m.

In seasonally adjusted terms, exports of non-rural goods rose \$682m (4%) to \$17,386m.

The main components contributing to the rise in seasonally adjusted estimates were:

- metal ores and minerals, up \$253m (3%)
- other mineral fuels, up \$248m (13%)
- coal, coke and briquettes, up \$134m (4%).

For price and volume details, see the *Selected commodities* section on page 11.

ANALYSIS AND COMMENTS *continued*

Exports of goods *continued*

NET EXPORTS OF GOODS UNDER MERCHANTING

In trend terms, net exports of goods under merchanting fell \$2m (13%) to \$14m.

In seasonally adjusted terms, net exports of goods under merchanting remained steady at \$12m.

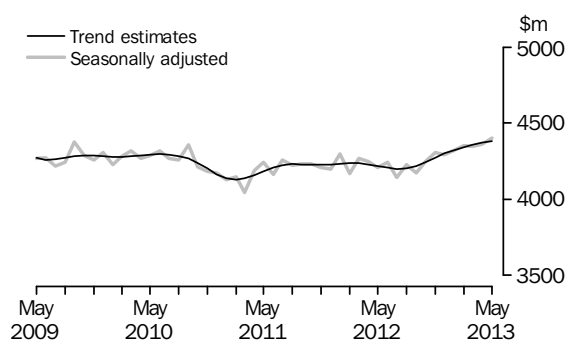
NON-MONETARY GOLD

In trend terms, exports of non-monetary gold rose \$23m (2%) to \$1,317m.

In original and seasonally adjusted terms, exports of non-monetary gold rose \$135m (10%) to \$1,442m.

Exports of services

SERVICES CREDITS



In trend terms, services credits rose \$11m to \$4,382m.

In seasonally adjusted terms, services credits rose \$39m (1%) to \$4,401m.

The main component contributing to the rise in seasonally adjusted estimates was travel, up \$26m (1%).

In seasonally adjusted terms, tourism related services credits rose \$34m (1%) to \$2,762m.

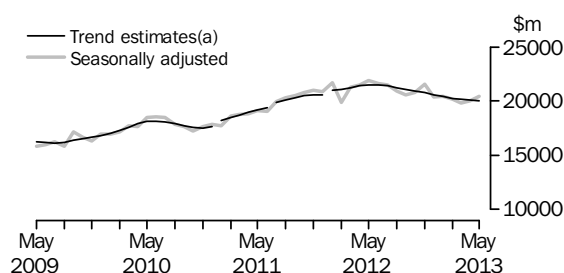
IMPORTS OF GOODS AND SERVICES

Between April and May 2013, the trend estimate of goods and services debits fell \$43m to \$25,344m.

In seasonally adjusted terms, goods and services debits rose \$414m (2%) to \$25,774m. Consumption goods rose \$357m (7%), intermediate and other merchandise goods rose \$351m (4%). Capital goods fell \$290m (5%) and non-monetary gold fell \$15m (3%). Services debits rose \$10m.

Imports of goods

GOODS DEBITS



(a) Trend breaks have been applied to January 2011, July 2011 and January 2012

ANALYSIS AND COMMENTS *continued*

Imports of goods *continued*

CONSUMPTION GOODS

In trend terms, imports of consumption goods fell \$29m (1%) to \$5,745m.

In seasonally adjusted terms, imports of consumption goods rose \$357m (7%) to \$5,844m.

The main components contributing to the rise in seasonally adjusted estimates were:

- consumption goods n.e.s., up \$209m (12%)
- toys, books and leisure goods, up \$40m (12%)
- textiles, clothing and footwear, up \$39m (5%)
- household electrical items, up \$34m (10%).

CAPITAL GOODS

In trend terms, imports of capital goods fell \$46m (1%) to \$4,948m.

In seasonally adjusted terms, imports of capital goods fell \$290m (5%) to \$5,055m.

The main components contributing to the fall in seasonally adjusted estimates were:

- civil aircraft and confidentialised items, down \$154m (32%)
- capital goods n.e.s., down \$149m (13%).

INTERMEDIATE AND OTHER MERCHANDISE GOODS

In trend terms, imports of intermediate and other merchandise goods rose \$9m to \$8,907m.

In seasonally adjusted terms, imports of intermediate and other merchandise goods rose \$351m (4%) to \$9,114m.

The main components contributing to the rise in seasonally adjusted estimates were:

- processed industrial supplies n.e.s., up \$214m (11%)
- primary industrial supplies n.e.s., up \$47m (37%)
- iron and steel, up \$41m (14%)
- fuels and lubricants, up \$32m (1%).

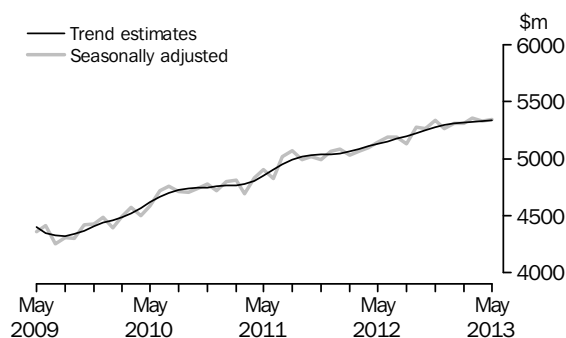
NON-MONETARY GOLD

In trend terms, imports of non-monetary gold rose \$20m (5%) to \$409m.

In original and seasonally adjusted terms, imports of non-monetary gold fell \$15m (3%) to \$419m.

Imports of services

SERVICES DEBITS



ANALYSIS AND COMMENTS *continued*

Imports of services continued

In trend terms, services debits rose \$5m to \$5,337m.

In seasonally adjusted terms, services debits rose \$10m to \$5,341m.

The main components contributing to the rise in seasonally adjusted estimates were:

- other services, up \$18m (1%)
- transport, up \$14m (1%).

Partly offsetting these rises was the travel component, down \$19m (1%).

In seasonally adjusted terms, tourism related services debits fell \$36m (1%) to \$2,752m.

Selected commodities

SELECTED COMMODITIES, Quantity and unit value analysis: International merchandise trade basis (a)— Original terms

		CHANGE IN					
		Dec 2012	Jan 2013	Feb 2013	Mar 2013	Apr 2013	May 2013
		%	%	%	%	%	%
IRON ORE							
Lump							
Quantity		12	-15	-12	28	8	-11
Unit value		1	15	4	-1	4	2
Fines							
Quantity		18	-19	-4	23	-1	8
Unit value		3	13	8	-2	—	—
COAL							
Hard coking							
Quantity		8	-15	-4	-3	11	2
Unit value		1	3	3	-1	—	1
Semi-soft							
Quantity		8	-15	-5	31	-18	37
Unit value		2	2	2	1	—	3
Thermal							
Quantity		21	-10	-14	-6	19	-6
Unit value		-3	—	1	-1	-3	6

— nil or rounded to zero (including null cells)

(a) Data in this table are on a revised international merchandise trade basis and exclude value adjustments applied to balance of payments series.

On an international merchandise trade basis, in original terms (noting the footnote in the above table), between April and May 2013 the largest movements recorded for the following selected commodities were:

Iron ore lump fell \$144m (9%), with quantities down 11% and unit values up 2%. Exports to China fell \$123m (12%), with quantities down 12%.

Iron ore fines rose \$324m (8%), with quantities up 8%.

Exports to:

- China rose \$420m (14%), with quantities up 15% and unit values down 1%
- Taiwan fell \$76m (59%), with quantities down 58% and unit values down 2%.

ANALYSIS AND COMMENTS *continued*

Selected commodities continued

Hard coking coal rose \$44m (4%), with quantities up 2% and unit values up 1%.

Exports to:

- Japan rose \$78m (40%), with quantities up 32% and unit values up 6%
- the Republic of Korea rose \$72m (230%), with quantities up 218% and unit values up 4%
- Netherlands fell \$63m (61%), with quantities down 60% and unit values down 2%.

Semi-soft coal rose \$226m (41%), with quantities up 37% and unit values up 3%.

Exports to:

- the Republic of Korea rose \$78m (153%), with quantities up 127% and unit values up 11%
- China rose \$71m (63%), with quantities up 76% and unit values down 7%
- Japan rose \$37m (16%), with quantities up 10% and unit values up 6%
- India rose \$29m (39%), with quantities up 33% and unit values up 4%.

Thermal coal fell \$12m (1%), with quantities down 6% and unit values up 6%.

Exports to:

- China fell \$34m (13%), with quantities down 19% and unit values up 7%
- Japan rose \$18m (3%), with quantities down 1% and unit values up 4%.

GOODS AND SERVICES(a), Summary—Seasonally Adjusted and Trend Estimates

	Jun 2012	Jul 2012	Aug 2012	Sep 2012	Oct 2012	Nov 2012	Dec 2012	Jan 2013	Feb 2013	Mar 2013	Apr 2013	May 2013
	\$m	\$m	\$m	\$m	\$m	\$m	\$m	\$m	\$m	\$m	\$m	\$m
SEASONALLY ADJUSTED												
BALANCE												
On goods and services	-942	-1 536	-1 956	-2 128	-1 808	-2 294	-655	-1 033	102	508	171	670
CREDITS												
Total goods and services	25 888	25 174	24 113	23 742	24 242	24 621	24 964	24 745	25 577	25 684	25 530	26 444
Total goods	21 646	21 031	19 886	19 567	19 994	20 313	20 671	20 422	21 225	21 335	21 169	22 043
Rural goods(b)	3 001	2 956	2 923	2 868	2 985	3 028	2 960	2 853	3 063	3 069	3 145	3 203
Non-rural goods(b)	16 930	16 774	15 663	15 150	15 356	15 778	16 478	16 123	16 859	17 078	16 704	17 386
Net exports of goods under merchandise(c)	11	19	19	20	18	18	16	20	20	20	12	12
Non-monetary gold(c)	1 704	1 282	1 280	1 530	1 635	1 489	1 217	1 426	1 283	1 168	1 307	1 442
Total services	4 242	4 143	4 228	4 174	4 248	4 308	4 292	4 324	4 351	4 348	4 362	4 401
DEBITS												
Total goods and services	-26 830	-26 710	-26 070	-25 869	-26 050	-26 915	-25 619	-25 778	-25 474	-25 176	-25 360	-25 774
Total goods	-21 642	-21 517	-20 941	-20 590	-20 788	-21 578	-20 355	-20 471	-20 164	-19 819	-20 029	-20 432
Consumption goods	-5 633	-5 673	-5 743	-5 516	-5 640	-5 807	-5 692	-5 933	-5 917	-5 864	-5 487	-5 844
Capital goods	-6 477	-5 876	-5 773	-5 448	-5 623	-6 010	-5 319	-5 394	-5 127	-4 565	-5 345	-5 055
Intermediate and other merchandise goods	-9 003	-9 438	-9 037	-8 943	-8 981	-9 395	-8 967	-8 774	-8 781	-9 024	-8 763	-9 114
Non-monetary gold(c)	-529	-531	-388	-683	-545	-366	-377	-371	-339	-367	-434	-419
Total services	-5 187	-5 193	-5 129	-5 279	-5 262	-5 338	-5 264	-5 307	-5 310	-5 357	-5 331	-5 341
TREND ESTIMATES (d)												
BALANCE												
On goods and services	-1 273	-1 519	-1 786	-1 935	-1 898	-1 629	-1 189	-689	-229	159	472	721
CREDITS												
Total goods and services	25 353	25 029	24 619	24 318	24 251	24 408	24 715	25 055	25 350	25 615	25 859	26 065
Total goods	21 148	20 830	20 417	20 101	20 008	20 135	20 414	20 731	21 009	21 258	21 488	21 683
Rural goods(b)	2 920	2 946	2 952	2 947	2 945	2 947	2 961	2 988	3 025	3 070	3 115	3 159
Non-rural goods(b)	16 780	16 402	15 978	15 663	15 582	15 737	16 045	16 385	16 665	16 883	17 063	17 192
Net exports of goods under merchandise	15	16	17	18	19	19	19	18	18	17	16	14
Non-monetary gold	1 432	1 466	1 471	1 473	1 462	1 432	1 390	1 340	1 300	1 289	1 294	1 317
Total services	4 206	4 199	4 202	4 217	4 243	4 273	4 300	4 323	4 341	4 357	4 371	4 382
DEBITS												
Total goods and services	-26 626	-26 548	-26 405	-26 253	-26 149	-26 037	-25 904	-25 743	-25 579	-25 456	-25 387	-25 344
Total goods	-21 476	-21 374	-21 207	-21 031	-20 900	-20 763	-20 608	-20 434	-20 262	-20 132	-20 056	-20 008
Consumption goods	-5 671	-5 669	-5 655	-5 650	-5 686	-5 740	-5 788	-5 816	-5 819	-5 801	-5 774	-5 745
Capital goods	-6 111	-6 001	-5 870	-5 755	-5 656	-5 551	-5 438	-5 306	-5 171	-5 065	-4 994	-4 948
Intermediate and other merchandise goods	-9 195	-9 185	-9 153	-9 106	-9 072	-9 028	-8 978	-8 935	-8 904	-8 891	-8 898	-8 907
Non-monetary gold	-499	-519	-529	-519	-487	-444	-404	-377	-368	-375	-389	-409
Total services	-5 150	-5 174	-5 198	-5 222	-5 249	-5 274	-5 295	-5 309	-5 317	-5 324	-5 332	-5 337
(a) For sign conventions, see paragraph 15 of the Explanatory Notes.						(d) Caution should be used when interpreting recent trend estimates as they may be affected by unusual economic factors. For more details on trend estimates, please see paragraph 19 of the Explanatory Notes.						
(b) For all time periods, estimates for sugar, sugar preparations and honey are included in Non-rural goods.												
(c) This component is not seasonally adjusted.												

GOODS AND SERVICES (a), Summary—Original

	Jun 2012	Jul 2012	Aug 2012	Sep 2012	Oct 2012	Nov 2012	Dec 2012	Jan 2013	Feb 2013	Mar 2013	Apr 2013	May 2013
	\$m	\$m	\$m	\$m	\$m	\$m	\$m	\$m	\$m	\$m	\$m	\$m
BALANCE												
On goods and services	30	-1 571	-2 098	-2 278	-3 600	-4 471	1 020	-3 192	506	2 216	659	1 525
CREDITS												
Total goods and services	26 403	25 847	25 070	23 769	24 794	24 124	26 217	22 287	23 494	25 924	25 399	27 277
Total goods	22 418	21 735	20 786	19 742	20 364	19 794	21 934	18 123	19 087	21 487	20 896	22 884
Rural goods(b)	3 151	2 964	2 900	2 754	2 920	2 831	3 071	2 421	2 985	3 328	3 159	3 561
Non-rural goods(b)	17 552	17 470	16 587	15 438	15 791	15 456	17 630	14 256	14 799	16 971	16 418	17 869
Net exports of goods under merchandising	11	19	19	20	18	18	16	20	20	20	12	12
Non-monetary gold	1 704	1 282	1 280	1 530	1 635	1 489	1 217	1 426	1 283	1 168	1 307	1 442
Total services	3 985	4 112	4 284	4 027	4 430	4 330	4 283	4 164	4 407	4 437	4 503	4 393
DEBITS												
Total goods and services	-26 373	-27 418	-27 168	-26 047	-28 394	-28 595	-25 197	-25 479	-22 988	-23 708	-24 740	-25 752
Total goods	-21 081	-21 942	-22 033	-20 382	-22 769	-23 366	-19 710	-19 961	-18 389	-18 679	-19 559	-20 679
Consumption goods	-5 316	-5 759	-6 120	-5 536	-6 522	-6 676	-5 466	-5 664	-5 395	-5 274	-5 276	-5 812
Capital goods	-6 451	-6 040	-6 109	-5 360	-6 162	-6 592	-5 303	-5 094	-4 453	-4 332	-5 065	-5 152
Intermediate and other merchandise goods	-8 785	-9 612	-9 416	-8 803	-9 540	-9 732	-8 564	-8 832	-8 202	-8 706	-8 784	-9 296
Non-monetary gold	-529	-531	-388	-683	-545	-366	-377	-371	-339	-367	-434	-419
Total services	-5 292	-5 476	-5 135	-5 665	-5 625	-5 229	-5 487	-5 518	-4 599	-5 029	-5 181	-5 073

(a) For sign conventions, see paragraph 15 of the Explanatory Notes.

(b) For all time periods, estimates for sugar, sugar preparations and honey are included in Non-rural goods.

							11 MONTHS ENDED MAY		Change
	2009-10	2010-11	2011-12	Mar 2013	Apr 2013	May 2013	2012	2013	
	\$m	\$m	\$m	\$m	\$m	\$m	\$m	\$m	
Total goods credits	201 777	246 979	265 109	21 487	20 896	22 884	242 691	226 832	-6.5
General merchandise	187 227	232 500	248 248	20 299	19 577	21 430	227 545	211 579	-7.0
<i>Rural goods</i>	25 589	30 473	34 728	3 328	3 159	3 561	31 577	32 894	4.2
Meat and meat preparations	6 350	6 930	7 121	695	651	736	6 495	6 944	6.9
Cereal grains and cereal preparations	5 266	7 351	9 061	981	848	1 005	8 200	8 499	3.6
Wool and sheepskins	2 303	3 048	3 123	336	252	248	2 923	2 629	-10.1
Other rural (a)	11 670	13 144	15 423	1 316	1 408	1 572	13 959	14 822	6.2
<i>Non-rural goods</i>	161 638	202 027	213 520	16 971	16 418	17 869	195 968	178 685	-8.8
Metal ores and minerals	53 610	79 448	85 426	7 350	7 363	7 797	78 346	72 320	-7.7
Coal, coke and briquettes	36 787	44 101	48 216	2 919	3 064	3 331	44 527	35 195	-21.0
Other mineral fuels	18 984	23 594	25 691	2 107	1 903	2 167	23 338	24 451	4.8
Metals (excl. non-monetary gold)	10 735	12 687	11 699	968	982	1 015	10 839	9 565	-11.8
Machinery	7 977	8 444	8 838	831	648	805	8 067	7 996	-0.9
Transport equipment	4 073	3 902	4 198	420	297	386	3 858	3 975	3.0
Other manufactures	16 375	16 289	16 916	1 358	1 215	1 350	15 551	14 577	-6.3
Other non-rural (incl. sugar and beverages) (a)	11 708	11 972	10 868	879	801	867	9 919	9 069	-8.6
Goods procured in ports by carriers	1 389	1 590	1 668	139	145	151	1 523	1 537	0.9
Net exports of goods under merchanting	250	223	211	20	12	12	200	194	-3.0
Goods acquired under merchanting									
(negative exports)	-1 799	-1 723	-1 533	-97	-96	-96	-1 389	-1 331	4.2
Goods sold under merchanting	2 049	1 946	1 744	117	108	108	1 589	1 525	-4.0
Non-monetary gold	14 300	14 256	16 650	1 168	1 307	1 442	14 946	15 059	0.8

(a) For all time periods, estimates for sugar, sugar preparations and honey are included in Other non-rural.

GOODS DEBITS(a), Original

	11 MONTHS ENDED MAY								
	2009-10	2010-11	2011-12	Mar	Apr	May	2012	2013	Change
	\$m	\$m	\$m	\$m	\$m	\$m	\$m	\$m	%
Total goods debits	-205 499	-218 751	-251 302	-18 679	-19 559	-20 679	-230 221	-227 469	1.2
General merchandise	-198 636	-213 784	-244 594	-18 312	-19 125	-20 260	-224 042	-222 649	0.6
<i>Consumption goods</i>	-62 520	-63 776	-66 712	-5 274	-5 276	-5 812	-61 396	-63 500	-3.4
Food and beverages, mainly for consumption	-8 770	-9 017	-9 802	-832	-788	-837	-9 084	-9 474	-4.3
Household electrical items	-5 483	-4 837	-4 438	-267	-323	-400	-4 126	-3 932	4.7
Non-industrial transport equipment	-16 288	-15 953	-17 442	-1 594	-1 509	-1 524	-15 800	-17 130	-8.4
Textiles, clothing and footwear	-7 569	-8 478	-8 785	-633	-742	-718	-8 159	-8 666	-6.2
Toys, books and leisure goods	-4 675	-4 443	-4 307	-241	-275	-396	-4 022	-3 809	5.3
Consumption goods n.e.s.	-19 735	-21 048	-21 938	-1 707	-1 639	-1 937	-20 205	-20 489	-1.4
<i>Capital goods</i>	-47 923	-51 776	-69 125	-4 332	-5 065	-5 152	-62 674	-59 662	4.8
Machinery and industrial equipment	-15 560	-15 727	-20 340	-1 404	-1 536	-1 697	-18 456	-18 785	-1.8
ADP equipment	-7 633	-7 786	-8 214	-597	-600	-674	-7 331	-7 121	2.9
Telecommunications equipment	-6 073	-7 023	-7 835	-628	-642	-700	-7 127	-7 529	-5.6
Civil aircraft and confidentialised items(b)	-5 051	-5 254	-6 346	-178	-484	-330	-5 721	-4 063	29.0
Industrial transport equipment n.e.s.	-6 811	-6 859	-9 583	-682	-748	-760	-8 621	-9 012	-4.5
Capital goods n.e.s.	-6 795	-9 127	-16 807	-843	-1 055	-991	-15 418	-13 152	14.7
<i>Intermediate and other merchandise goods</i>	-88 193	-98 232	-108 757	-8 706	-8 784	-9 296	-99 972	-99 487	0.5
Food and beverages, mainly for industry	-1 035	-1 223	-1 251	-87	-92	-104	-1 168	-1 048	10.3
Primary industrial supplies n.e.s.	-1 346	-1 713	-1 678	-84	-126	-154	-1 585	-1 451	8.5
Fuels and lubricants	-26 626	-31 699	-38 288	-3 191	-3 321	-3 353	-35 332	-35 914	-1.6
Parts for transport equipment	-8 258	-8 924	-10 310	-789	-799	-815	-9 379	-8 999	4.1
Parts for ADP equipment	-973	-906	-701	-42	-50	-50	-636	-535	15.9
Other parts for capital goods	-13 792	-14 338	-14 101	-1 109	-1 120	-1 146	-12 850	-12 622	1.8
Organic and inorganic chemicals	-4 377	-4 495	-4 504	-281	-282	-263	-4 135	-3 874	6.3
Paper and paperboard	-2 299	-2 339	-2 165	-171	-156	-179	-2 007	-2 047	-2.0
Textile yarn and fabrics	-1 155	-1 114	-1 082	-70	-78	-87	-999	-903	9.6
Iron and steel	-3 280	-3 788	-4 002	-327	-269	-350	-3 564	-3 650	-2.4
Plastics	-2 755	-2 910	-3 055	-233	-248	-271	-2 819	-2 779	1.4
Processed industrial supplies n.e.s.	-20 083	-21 981	-24 868	-2 113	-2 057	-2 350	-22 915	-23 597	-3.0
Other merchandise goods(b)	-818	-1 135	-838	-62	-42	-30	-818	-447	45.4
Goods procured in ports by carriers	-1 396	-1 667	-1 914	-147	-144	-144	-1 765	-1 621	8.2
Non-monetary gold	-6 863	-4 967	-6 708	-367	-434	-419	-6 179	-4 820	22.0

(a) For sign conventions, see paragraph 15 of the Explanatory Notes.

(b) From July 2008, commodities subject to a 'no commodity details' or 'no value details' restriction are included in Civil aircraft and confidentialised items. For earlier periods, commodities subject to a 'no commodity details' or 'no value details' restriction are included in Other merchandise goods.

GOODS CREDITS, Seasonally Adjusted

	Aug 2012	Sep 2012	Oct 2012	Nov 2012	Dec 2012	Jan 2013	Feb 2013	Mar 2013	Apr 2013	May 2013
	\$m	\$m	\$m	\$m	\$m	\$m	\$m	\$m	\$m	\$m
Total goods credits	19 886	19 567	19 994	20 313	20 671	20 422	21 225	21 335	21 169	22 043
General merchandise	18 587	18 017	18 341	18 806	19 438	18 976	19 922	20 147	19 850	20 589
<i>Rural goods</i>	2 923	2 868	2 985	3 028	2 960	2 853	3 063	3 069	3 145	3 203
Meat and meat preparations	605	590	641	632	629	631	643	656	672	694
Cereal grains and cereal preparations	855	750	818	709	633	725	766	816	778	856
Wool and sheepskins	216	221	222	246	255	237	258	244	225	230
Other rural (a)	1 247	1 307	1 305	1 442	1 444	1 261	1 396	1 353	1 471	1 424
<i>Non-rural goods</i>	15 663	15 150	15 356	15 778	16 478	16 123	16 859	17 078	16 704	17 386
Metal ores and minerals	6 079	5 292	5 767	6 293	6 792	6 785	7 063	7 274	7 309	7 562
Coal, coke and briquettes (b)	3 017	3 342	3 182	3 084	3 190	3 036	3 449	3 341	3 165	3 299
Other mineral fuels (c)	2 375	2 415	2 264	2 191	2 214	2 251	1 950	2 130	1 969	2 217
Metals (excl. non-monetary gold) (c)	822	765	874	782	868	780	1 029	917	939	936
Machinery	723	722	679	773	710	722	725	755	711	756
Transport equipment	384	387	357	348	347	325	356	366	344	331
Other manufactures	1 377	1 330	1 306	1 296	1 390	1 292	1 330	1 279	1 314	1 278
Other non-rural (incl. sugar and beverages) (a)	752	762	793	874	828	790	815	878	807	856
Goods procured in ports by carriers (c)	134	135	136	137	139	141	142	138	146	150
Net exports of goods under merchanting (d)	19	20	18	18	16	20	20	20	12	12
Non-monetary gold (d)	1 280	1 530	1 635	1 489	1 217	1 426	1 283	1 168	1 307	1 442

(a) For all time periods, estimates for sugar, sugar preparations and honey are included in Other non-rural.

(b) From July 1971 to June 2005, only a length-of-month adjustment has been applied to this component. From July 2005, this component is seasonally adjusted using seasonal factors derived from a monthly volume series.

(c) In using these seasonally adjusted series, care should be exercised because of the difficulties associated with reliably estimating the seasonal pattern.

(d) This component is not seasonally adjusted.

GOODS DEBITS(a), Seasonally Adjusted

	Aug 2012	Sep 2012	Oct 2012	Nov 2012	Dec 2012	Jan 2013	Feb 2013	Mar 2013	Apr 2013	May 2013
	\$m	\$m	\$m	\$m	\$m	\$m	\$m	\$m	\$m	\$m
Total goods debits	-20 941	-20 590	-20 788	-21 578	-20 355	-20 471	-20 164	-19 819	-20 029	-20 432
General merchandise	-20 553	-19 907	-20 243	-21 212	-19 978	-20 100	-19 825	-19 452	-19 595	-20 013
Consumption goods	-5 743	-5 516	-5 640	-5 807	-5 692	-5 933	-5 917	-5 864	-5 487	-5 844
Food and beverages, mainly for consumption	-849	-825	-835	-842	-802	-856	-900	-905	-857	-872
Household electrical items	-338	-327	-373	-368	-357	-349	-356	-354	-342	-376
Non-industrial transport equipment	-1 636	-1 442	-1 441	-1 599	-1 609	-1 794	-1 581	-1 598	-1 505	-1 524
Textiles, clothing and footwear	-759	-776	-772	-781	-753	-748	-841	-760	-749	-788
Toys, books and leisure goods	-330	-350	-339	-344	-360	-352	-332	-347	-324	-364
Consumption goods n.e.s.	-1 831	-1 796	-1 879	-1 873	-1 810	-1 833	-1 907	-1 900	-1 710	-1 919
Capital goods	-5 773	-5 448	-5 623	-6 010	-5 319	-5 394	-5 127	-4 565	-5 345	-5 055
Machinery and industrial equipment	-1 859	-1 698	-1 718	-1 741	-1 700	-1 628	-1 697	-1 565	-1 624	-1 622
ADP equipment	-637	-570	-680	-671	-726	-726	-717	-599	-609	-611
Telecommunications equipment	-630	-725	-638	-762	-497	-764	-649	-695	-719	-756
Civil aircraft and confidentialised items(b)(c)	-565	-371	-419	-515	-210	-293	-163	-178	-484	-330
Industrial transport equipment n.e.s.(d)	-968	-846	-825	-876	-890	-753	-803	-668	-781	-757
Capital goods n.e.s.	-1 113	-1 239	-1 343	-1 445	-1 296	-1 231	-1 099	-860	-1 128	-979
Intermediate and other merchandise goods	-9 037	-8 943	-8 981	-9 395	-8 967	-8 774	-8 781	-9 024	-8 763	-9 114
Food and beverages, mainly for industry	-90	-103	-85	-104	-95	-93	-85	-92	-96	-101
Primary industrial supplies n.e.s.(d)	-141	-109	-144	-138	-110	-108	-144	-108	-127	-174
Fuels and lubricants(c)	-3 085	-3 136	-3 242	-3 439	-3 416	-3 200	-3 036	-3 191	-3 321	-3 353
Parts for transport equipment	-876	-815	-836	-801	-822	-785	-782	-784	-800	-800
Parts for ADP equipment	-52	-50	-51	-51	-47	-48	-52	-42	-47	-48
Other parts for capital goods	-1 235	-1 215	-1 140	-1 171	-1 009	-1 123	-1 143	-1 170	-1 100	-1 093
Organic and inorganic chemicals	-364	-428	-383	-451	-354	-311	-322	-282	-281	-282
Paper and paperboard	-180	-175	-188	-199	-191	-182	-183	-196	-167	-184
Textile yarn and fabrics	-82	-81	-82	-85	-77	-80	-81	-83	-78	-82
Iron and steel	-338	-356	-343	-342	-332	-285	-285	-360	-286	-327
Plastics	-256	-229	-240	-270	-227	-255	-259	-255	-255	-266
Processed industrial supplies n.e.s.	-2 118	-2 055	-2 067	-2 129	-2 112	-2 139	-2 243	-2 252	-2 017	-2 231
Other merchandise goods(b)(d)(e)	-71	-42	-30	-66	-25	-20	-20	-62	-42	-30
Goods procured in ports by carriers(c)	-147	-149	-150	-150	-151	-146	-146	-147	-144	-144
Non-monetary gold(c)	-388	-683	-545	-366	-377	-371	-339	-367	-434	-419

(a) For sign conventions, see paragraph 15 of the Explanatory Notes.

(b) From July 2008, commodities subject to a 'no commodity details' or 'no value details' restriction are included in Civil aircraft and confidentialised items. For earlier periods, commodities subject to a 'no commodity details' or 'no value details' restriction are included in Other merchandise goods.

(c) This component is not seasonally adjusted.

(d) In using these seasonally adjusted series, care should be exercised because of the difficulties associated with reliably estimating the seasonal pattern.

(e) From July 1981, this component is not seasonally adjusted.

GOODS CREDITS(a), Trend Estimates

	Aug 2012	Sep 2012	Oct 2012	Nov 2012	Dec 2012	Jan 2013	Feb 2013	Mar 2013	Apr 2013	May 2013
	\$m	\$m	\$m	\$m	\$m	\$m	\$m	\$m	\$m	\$m
Total goods credits	20 417	20 101	20 008	20 135	20 414	20 731	21 009	21 258	21 488	21 683
General merchandise	18 930	18 610	18 527	18 684	19 006	19 373	19 690	19 952	20 178	20 352
<i>Rural goods</i>	2 952	2 947	2 945	2 947	2 961	2 988	3 025	3 070	3 115	3 159
Meat and meat preparations	605	613	619	625	631	639	648	658	669	680
Cereal grains and cereal preparations	807	785	756	729	718	727	750	777	803	832
Wool and sheepskins	227	226	230	238	244	246	245	241	237	232
Other rural(b)	1 313	1 324	1 340	1 355	1 368	1 377	1 383	1 393	1 406	1 415
<i>Non-rural goods</i>	15 978	15 663	15 582	15 737	16 045	16 385	16 665	16 883	17 063	17 192
Metal ores and minerals	6 109	5 944	5 961	6 166	6 478	6 797	7 050	7 240	7 390	7 495
Coal, coke and briquettes	3 256	3 187	3 155	3 154	3 176	3 210	3 241	3 268	3 289	3 303
Other mineral fuels	2 345	2 337	2 308	2 253	2 191	2 140	2 106	2 085	2 078	2 079
Metals (excl. non-monetary gold)	834	812	808	822	849	878	906	928	944	960
Machinery	726	722	720	721	724	728	731	734	737	737
Transport equipment	379	372	363	354	348	346	346	346	346	344
Other manufactures	1 367	1 341	1 327	1 323	1 322	1 319	1 313	1 305	1 297	1 289
Other non-rural (incl. sugar and beverages)(b)	826	812	804	807	817	827	831	834	837	839
Goods procured in ports by carriers	137	136	136	137	138	140	141	143	145	147
Net exports of goods under merchanting	17	18	19	19	19	18	18	17	16	14
Non-monetary gold	1 471	1 473	1 462	1 432	1 390	1 340	1 300	1 289	1 294	1 317

(a) Caution should be used when interpreting recent trend estimates as they may be affected by unusual economic factors. For more details on trend estimates, please see paragraph 19 of the Explanatory Notes.

(b) For all time periods, estimates for sugar, sugar preparations and honey are included in Other non-rural.

GOODS DEBITS(a)(b), Trend Estimates

	Aug 2012	Sep 2012	Oct 2012	Nov 2012	Dec 2012	Jan 2013	Feb 2013	Mar 2013	Apr 2013	May 2013
	\$m	\$m	\$m	\$m	\$m	\$m	\$m	\$m	\$m	\$m
Total goods debits	-21 207	-21 031	-20 900	-20 763	-20 608	-20 434	-20 262	-20 132	-20 056	-20 008
General merchandise	-20 678	-20 512	-20 413	-20 319	-20 204	-20 057	-19 894	-19 757	-19 667	-19 599
<i>Consumption goods</i>	-5 655	-5 650	-5 686	-5 740	-5 788	-5 816	-5 819	-5 801	-5 774	-5 745
Food and beverages, mainly for consumption	-837	-832	-831	-835	-845	-857	-869	-877	-882	-885
Household electrical items	-344	-347	-353	-357	-358	-357	-355	-355	-355	-358
Non-industrial transport equipment	-1 516	-1 520	-1 543	-1 581	-1 613	-1 629	-1 623	-1 600	-1 569	-1 533
Textiles, clothing and footwear	-775	-770	-770	-771	-773	-775	-776	-776	-776	-776
Toys, books and leisure goods	-336	-340	-345	-348	-348	-346	-344	-343	-343	-344
Consumption goods n.e.s.	-1 848	-1 842	-1 844	-1 848	-1 851	-1 853	-1 852	-1 849	-1 847	-1 849
<i>Capital goods</i>	-5 870	-5 755	-5 656	-5 551	-5 438	-5 306	-5 171	-5 065	-4 994	-4 948
Machinery and industrial equipment	-1 822	-1 778	-1 739	-1 707	-1 683	-1 664	-1 645	-1 628	-1 613	-1 602
ADP equipment	-663	-655	-661	-678	-693	-694	-678	-655	-630	-609
Telecommunications equipment	-683	-679	-670	-662	-661	-668	-680	-697	-716	-730
Civil aircraft and confidentialised items(c)	-515	-481	-423	-358	-305	-275	-266	-274	-293	-317
Industrial transport equipment n.e.s.	-892	-874	-862	-846	-826	-799	-776	-756	-742	-730
Capital goods n.e.s.	-1 296	-1 289	-1 300	-1 300	-1 270	-1 206	-1 126	-1 056	-1 001	-959
<i>Intermediate and other merchandise goods</i>	-9 153	-9 106	-9 072	-9 028	-8 978	-8 935	-8 904	-8 891	-8 898	-8 907
Food and beverages, mainly for industry	-94	-95	-95	-95	-94	-93	-92	-93	-94	-95
Primary industrial supplies n.e.s.	-125	-126	-127	-126	-123	-122	-124	-129	-135	-144
Fuels and lubricants	-3 222	-3 242	-3 272	-3 281	-3 271	-3 251	-3 232	-3 226	-3 237	-3 251
Parts for transport equipment	-874	-849	-827	-810	-800	-795	-792	-790	-790	-793
Parts for ADP equipment	-53	-52	-50	-50	-49	-48	-48	-47	-47	-46
Other parts for capital goods	-1 220	-1 191	-1 159	-1 132	-1 117	-1 114	-1 117	-1 120	-1 121	-1 119
Organic and inorganic chemicals	-399	-404	-401	-389	-367	-341	-316	-296	-281	-267
Paper and paperboard	-182	-184	-186	-189	-189	-188	-186	-183	-181	-179
Textile yarn and fabrics	-84	-82	-82	-81	-81	-81	-81	-81	-81	-81
Iron and steel	-370	-357	-342	-329	-320	-314	-311	-310	-311	-313
Plastics	-247	-246	-245	-246	-248	-251	-254	-256	-259	-260
Processed industrial supplies n.e.s.	-2 092	-2 084	-2 091	-2 112	-2 136	-2 157	-2 171	-2 177	-2 179	-2 177
Other merchandise goods(c)	-45	-47	-45	-40	-36	-34	-35	-36	-38	-38
Goods procured in ports by carriers	-147	-148	-149	-149	-149	-148	-147	-146	-145	-144
Non-monetary gold	-529	-519	-487	-444	-404	-377	-368	-375	-389	-409

(a) For sign conventions, see paragraph 15 of the Explanatory Notes.

(b) Caution should be used when interpreting recent trend estimates as they may be affected by unusual economic factors. For more details on trend estimates, please see paragraph 19 of the Explanatory Notes.

(c) From July 2008, commodities subject to a 'no commodity details' or 'no value details' restriction are included in Civil aircraft and confidentialised items. For earlier periods, commodities subject to a 'no commodity details' or 'no value details' restriction are included in Other merchandise goods.

							11 MONTHS ENDED MAY		Change %
	2009-10	2010-11	2011-12	Mar 2013	Apr 2013	May 2013	2012	2013	
	\$m	\$m	\$m	\$m	\$m	\$m	\$m	\$m	
Services credits	51 359	50 343	50 835	4 437	4 503	4 393	46 850	47 370	1.1
Manufacturing services on physical inputs owned by others	48	33	21	—	—	—	20	—	-100.0
Maintenance and repair services n.i.e.	57	49	47	6	6	6	42	53	26.2
Transport	6 189	6 330	6 333	527	482	466	5 861	5 595	-4.5
Passenger(c)	2 610	2 714	2 622	229	178	161	2 447	2 247	-8.2
Freight	436	394	374	24	26	27	343	297	-13.4
Other	2 188	2 253	2 276	182	182	182	2 090	2 061	-1.4
Postal and courier services(d)	955	969	1 061	92	96	96	981	990	0.9
Travel	32 272	30 714	30 590	2 653	2 661	2 567	28 280	28 091	-0.7
Other services	12 793	13 217	13 844	1 251	1 354	1 354	12 647	13 631	7.8
Services debits	-53 399	-57 263	-60 872	-5 029	-5 181	-5 073	-55 580	-58 017	-4.4
Manufacturing services on physical inputs owned by others	—	-1	—	—	—	—	—	—	—
Maintenance and repair services n.i.e.	-294	-342	-379	-75	-32	-30	-337	-520	-54.3
Transport	-13 727	-14 750	-16 119	-1 389	-1 331	-1 385	-14 691	-15 480	-5.4
Passenger(c)	-5 118	-6 103	-6 688	-623	-550	-530	-6 054	-6 446	-6.5
Freight	-8 142	-8 245	-8 947	-709	-723	-797	-8 194	-8 442	-3.0
Other	-309	-288	-378	-49	-50	-50	-340	-512	-50.6
Postal and courier services(d)	-158	-114	-106	-8	-8	-8	-103	-80	22.3
Travel	-23 285	-25 203	-26 567	-1 947	-2 153	-1 992	-24 176	-23 885	1.2
Other services	-16 093	-16 967	-17 807	-1 618	-1 665	-1 666	-16 376	-18 132	-10.7
Memorandum items:									
Tourism related service credits(e)	34 882	33 428	33 212	2 882	2 839	2 728	30 727	30 338	-1.3
Tourism related service debits(e)	-28 403	-31 306	-33 255	-2 570	-2 703	-2 522	-30 230	-30 331	-0.3

— nil or rounded to zero (including null cells)

(a) For sign conventions, see paragraph 15 of the Explanatory Notes.

(b) For more detailed trade in services components, see table 11.

(c) Passenger services includes agency fees and commissions for air transport.

(d) Postal and courier services includes indirect commissions for sea transport.

(e) For a more detailed explanation of tourism related services, see paragraph 27 of the Explanatory Notes.

	Aug 2012	Sep 2012	Oct 2012	Nov 2012	Dec 2012	Jan 2013	Feb 2013	Mar 2013	Apr 2013	May 2013
	\$m	\$m	\$m	\$m	\$m	\$m	\$m	\$m	\$m	\$m
SEASONALLY ADJUSTED										
Services credits	4 228	4 174	4 248	4 308	4 292	4 324	4 351	4 348	4 362	4 401
Manufacturing services on physical inputs owned by others(b)	—	—	—	—	—	—	—	—	—	—
Maintenance and repair services n.i.e.(b)	5	4	5	4	4	4	4	6	6	6
Transport	496	473	508	523	508	513	519	517	513	521
Passenger(c)	206	185	200	216	203	202	208	207	197	205
Freight(d)	29	28	30	29	28	26	26	24	26	26
Other	184	184	190	189	189	186	187	188	187	187
Postal and courier services(e)	76	76	88	89	88	99	98	98	103	104
Travel	2 563	2 531	2 529	2 565	2 554	2 520	2 531	2 519	2 531	2 557
Other services	1 163	1 166	1 207	1 216	1 227	1 287	1 298	1 306	1 312	1 317
Services debits	-5 129	-5 279	-5 262	-5 338	-5 264	-5 307	-5 310	-5 357	-5 331	-5 341
Manufacturing services on physical inputs owned by others(b)	—	—	—	—	—	—	—	—	—	—
Maintenance and repair services n.i.e.(b)	-27	-98	-49	-46	-52	-48	-36	-75	-32	-30
Transport	-1 398	-1 389	-1 405	-1 445	-1 398	-1 404	-1 438	-1 418	-1 412	-1 426
Passenger(c)	-566	-595	-600	-600	-585	-597	-615	-613	-602	-585
Freight	-781	-744	-754	-795	-761	-749	-766	-746	-748	-779
Other(b)	-47	-46	-41	-41	-43	-49	-49	-49	-50	-50
Postal and courier services(e)(d)	-4	-4	-10	-9	-9	-8	-8	-9	-12	-12
Travel	-2 120	-2 197	-2 170	-2 204	-2 174	-2 181	-2 160	-2 190	-2 186	-2 167
Other services(d)	-1 583	-1 596	-1 637	-1 642	-1 640	-1 674	-1 675	-1 675	-1 701	-1 719
Memorandum items:										
Tourism related service credits(f)	2 770	2 716	2 729	2 780	2 756	2 722	2 738	2 726	2 728	2 762
Tourism related service debits(f)	-2 687	-2 791	-2 771	-2 804	-2 759	-2 778	-2 776	-2 803	-2 788	-2 752

TREND ESTIMATES

Services credits	4 202	4 217	4 243	4 273	4 300	4 323	4 341	4 357	4 371	4 382
Manufacturing services on physical inputs owned by others	—	—	—	—	—	—	—	—	—	—
Maintenance and repair services n.i.e.	5	5	4	4	4	4	5	5	6	6
Transport	491	493	499	506	512	515	516	517	517	518
Passenger(c)	197	197	200	203	205	206	205	204	203	202
Freight	29	29	29	28	28	27	26	26	25	25
Other	186	186	187	188	188	188	187	187	187	187
Postal and courier services(e)	79	80	83	87	92	95	98	100	102	104
Travel	2 541	2 541	2 543	2 543	2 540	2 535	2 533	2 532	2 533	2 534
Other services	1 165	1 178	1 197	1 219	1 245	1 268	1 288	1 303	1 315	1 324
Services debits	-5 198	-5 222	-5 249	-5 274	-5 295	-5 309	-5 317	-5 324	-5 332	-5 337
Manufacturing services on physical inputs owned by others	—	—	—	—	—	—	—	—	—	—
Maintenance and repair services n.i.e.	-34	-36	-40	-44	-47	-47	-44	-41	-37	-34
Transport	-1 398	-1 402	-1 407	-1 412	-1 416	-1 418	-1 419	-1 420	-1 420	-1 420
Passenger(c)	-577	-585	-590	-596	-600	-603	-603	-603	-602	-600
Freight	-771	-767	-766	-764	-762	-760	-758	-757	-757	-758
Other	-44	-44	-44	-44	-45	-46	-48	-49	-50	-51
Postal and courier services(e)	-5	-6	-7	-8	-9	-9	-9	-10	-10	-11
Travel	-2 191	-2 179	-2 174	-2 175	-2 180	-2 181	-2 179	-2 177	-2 177	-2 175
Other services	-1 574	-1 604	-1 627	-1 643	-1 653	-1 663	-1 675	-1 687	-1 698	-1 708
Memorandum items:										
Tourism related service credits(f)	2 738	2 738	2 743	2 745	2 744	2 741	2 738	2 736	2 736	2 736
Tourism related service debits(f)	-2 769	-2 764	-2 764	-2 771	-2 780	-2 784	-2 782	-2 781	-2 779	-2 775

— nil or rounded to zero (including null cells)

(a) For sign conventions, see paragraph 15 of the Explanatory Notes.

(b) This component is not seasonally adjusted.

(c) Passenger services includes agency fees and commissions for air transport.

(d) In using these seasonally adjusted series, care should be exercised because of the difficulties associated with reliably estimating the seasonal pattern.

(e) Postal and courier services includes indirect commissions for sea transport.

(f) For a more detailed explanation of tourism related services, see paragraph 27 of the Explanatory Notes.

	CREDITS				DEBITS			
	Jun Qtr	Sep Qtr	Dec Qtr	Mar Qtr	Jun Qtr	Sep Qtr	Dec Qtr	Mar Qtr
	2012	2012	2012	2013	2012	2012	2012	2013
	\$m	\$m	\$m	\$m	\$m	\$m	\$m	\$m
Services	12 556	12 423	13 043	13 008	-15 073	-16 276	-16 341	-15 146
Manufacturing services on physical inputs owned by others	4	—	—	—	—	—	—	—
Maintenance and repair services n.i.e.	14	14	13	14	-108	-152	-147	-159
Transport	1 426	1 471	1 575	1 601	-4 025	-4 297	-4 437	-4 030
Passenger(b)	537	538	662	708	-1 640	-1 796	-1 832	-1 738
Freight	87	85	86	73	-2 258	-2 337	-2 462	-2 123
Other	562	570	583	544	-116	-140	-125	-147
Postal and courier services(c)	240	278	244	276	-11	-24	-18	-22
Travel	7 536	7 555	7 671	7 637	-6 638	-7 064	-6 573	-6 103
Business	1 009	1 045	1 007	1 085	-824	-879	-766	-807
Personal	6 527	6 510	6 664	6 552	-5 814	-6 185	-5 807	-5 296
Education-related	3 896	3 865	3 379	3 263	-213	-339	-208	-227
Other(d)	2 631	2 645	3 285	3 289	-5 601	-5 846	-5 599	-5 069
Construction	13	6	9	9	—	—	—	—
Insurance and pension services	131	114	106	105	-184	-182	-188	-203
Financial services	329	363	521	543	-176	-217	-198	-200
Charges for the use of intellectual property n.i.e.	252	249	167	177	-1 016	-1 041	-1 066	-1 008
Telecommunications, computer and information services	428	420	456	455	-440	-475	-427	-475
Telecommunication services	30	57	59	46	-51	-64	-57	-53
Computer and information services	398	363	397	409	-389	-411	-370	-422
Computer services	331	290	312	314	-329	-355	-298	-323
Information services	21	19	20	20	-25	-20	-23	-36
Other services	46	54	65	75	-35	-36	-49	-63
Other business services	1 968	1 829	2 099	2 040	-1 951	-2 212	-2 645	-2 263
Research and development services	120	128	154	163	-57	-29	-64	-51
Professional and management consulting services	990	896	1 004	1 054	-757	-820	-1 094	-973
Legal, accounting, management consulting, public relations and other professional services	894	765	839	833	-706	-774	-1 028	-906
Advertising, market research and public opinion polling	96	131	165	221	-51	-46	-66	-67
Technical, trade-related and other business services	858	805	941	823	-1 137	-1 363	-1 487	-1 239
Architectural, engineering and other technical services	457	412	511	437	-664	-717	-837	-750
Waste treatment and de-pollution, agricultural and mining services	57	53	54	45	-99	-68	-104	-53
Operational leasing services	67	82	82	67	-161	-151	-170	-170
Trade-related commission services	184	156	179	169	-37	-45	-40	-68
Other business services n.i.e.	93	102	115	105	-176	-382	-336	-198
Personal, cultural and recreational services	239	192	216	211	-313	-414	-438	-483
Audiovisual and related services	35	49	35	54	-268	-354	-363	-344
Other personal, cultural and recreational services	204	143	181	157	-45	-60	-75	-139
Government goods and services n.i.e.	216	210	210	216	-222	-222	-222	-222
Memorandum items:								
Gross insurance premiums receivable / payable	338	306	309	294	-337	-338	-341	-381
Gross insurance claims payable / receivable	-198	-206	-216	-201	219	219	218	237
Tourism related services(e)	8 073	8 093	8 333	8 345	-8 278	-8 860	-8 405	-7 841

— nil or rounded to zero (including null cells)

(a) For sign conventions, see paragraph 15 of the Explanatory Notes.

(b) Passenger services includes agency fees and commissions for air transport.

(c) Postal and courier services includes indirect commissions for sea transport.

(d) Other personal travel includes health-related travel.

(e) For a more detailed explanation of tourism related services, see paragraph 27 of the Explanatory Notes.

	Mar	Apr	May	Percent	11 MONTHS	
	2013	2013	2013	of total	ENDED MAY	
	\$m	\$m	\$m	merchandise	2012	2013
				exports(b)	\$m	\$m
				%		
MAJOR COMMODITIES (c)						
011 Meat of bovine animals	470	441	490	2.2	4 262	4 581
041 Wheat and meslin	681	583	712	3.1	5 716	6 232
281 Iron ore and concentrates	5 587	5 684	5 882	25.9	57 692	52 160
283 Copper ores and concentrates	451	344	374	1.6	4 919	4 731
285 Aluminium ores and concentrates	473	482	463	2.0	4 866	5 032
287 Ores and concentrates of base metals, n.e.s.	338	280	453	2.0	3 793	3 865
321 Coal, not agglomerated	2 884	3 044	3 308	14.5	44 247	34 938
333 Crude petroleum oils	716	625	811	3.6	10 344	9 121
334 Refined petroleum oils	214	218	240	1.1	2 965	2 690
343 Natural gas	1 227	1 129	1 169	5.1	10 569	13 109
542 Medicaments	266	207	257	1.1	3 299	3 140
682 Copper	313	301	254	1.1	3 378	2 846
684 Aluminium	295	283	345	1.5	3 870	3 316
971 Gold, non-monetary	1 119	1 149	1 342	5.9	14 164	14 161
SECTION AND DIVISION OF THE SITC						
0 Food and live animals						
00 Live animals (excl. fish, crustaceans, molluscs and aquatic invertebrates)	53	63	102	0.4	1 000	874
01 Meat and meat preparations	695	650	736	3.2	6 493	6 941
02 Dairy products and birds' eggs	164	150	178	0.8	1 990	1 911
03 Fish (not marine mammals), crustaceans, molluscs and aquatic invertebrates, and preparations thereof	72	69	86	0.4	952	944
04 Cereals and cereal preparations	981	848	1 005	4.4	8 201	8 500
05 Vegetables and fruit	180	187	215	0.9	1 668	2 023
06 Sugars, sugar preparations and honey	28	21	18	0.1	310	264
07 Coffee, tea, cocoa, spices, and manufactures thereof	17	15	18	0.1	256	220
08 Feeding stuff for animals (excl. unmilled cereals)	98	98	124	0.5	1 053	1 176
09 Miscellaneous edible products and preparations	96	94	93	0.4	851	912
<i>Total Food and live animals</i>	2 386	2 194	2 575	11.3	22 775	23 766
1 Beverages and tobacco						
11 Beverages	172	160	175	0.8	1 909	1 883
12 Tobacco and tobacco manufactures	3	3	4	—	96	62
<i>Total Beverages and tobacco</i>	174	163	179	0.8	2 005	1 945
2 Crude materials, inedible, except fuels						
21 Hides, skins and furskins, raw	85	80	90	0.4	779	791
22 Oil-seeds and oleaginous fruits	367	391	168	0.7	1 449	2 146
23 Crude rubber (incl. synthetic and reclaimed)	2	2	2	—	20	20
24 Cork and wood	60	77	79	0.3	922	776
25 Pulp and waste paper	19	16	17	0.1	221	216
26 Textile fibres and their wastes (not manufactured into yarn or fabric)	357	342	554	2.4	4 897	4 641
27 Crude fertilizers (excl. those of Division 56) and crude minerals (excl. coal, petroleum and precious stones)	23	29	36	0.2	400	349
28 Metalliferous ores and metal scrap	7 327	7 334	7 761	34.1	78 062	71 973
29 Crude animal and vegetable materials, n.e.s.	20	24	25	0.1	212	230
<i>Total Crude materials, inedible, except fuels</i>	8 260	8 295	8 730	38.4	86 962	81 140
3 Mineral fuels, lubricants and related materials						
32 Coal, coke and briquettes	2 919	3 064	3 331	14.6	44 530	35 195
33 Petroleum, petroleum products and related materials	933	844	1 055	4.6	13 323	11 836
34 Gas, natural and manufactured	1 309	1 198	1 255	5.5	11 477	14 087
<i>Total Mineral fuels, lubricants and related materials</i>	5 160	5 106	5 641	24.8	69 329	61 118

— nil or rounded to zero (including null cells)

(a) Some SITC sections and divisions exclude commodities subject to a confidentiality restriction. These are included in Division 98. For more information see paragraph 26 of the Explanatory Notes.

(b) Percent of total merchandise is calculated for the most recent month.

(c) The 'Major commodities' section lists commodities at the SITC Rev 4 3-digit level which are the most significant (by value) or are of particular interest. Abbreviated descriptors have been used. The list of 'Major commodities' is reviewed annually.

	Mar 2013	Apr 2013	May 2013	Percent of total merchandise exports(b)	11 MONTHS ENDED MAY	
					2012	2013
					\$m	\$m
SECTION AND DIVISION OF THE SITC						
4	Animal and vegetable oils, fats and waxes					
41	42	25	52	0.2	346	331
42	16	19	16	0.1	156	160
43	Fats and oils (processed), waxes and inedible mixtures or preparations, of animal or vegetable origin, n.e.s.					
	1	2	1	—	10	12
	59	45	70	0.3	512	502
5	Chemicals and related products, n.e.s.					
51	16	10	19	0.1	172	204
52	77	70	82	0.4	596	695
53	59	57	57	0.2	719	558
54	300	235	291	1.3	3 677	3 548
55	Essential oils and resinoids and perfume materials, toilet, polishing and cleansing preparations					
	55	52	60	0.3	570	594
56	2	3	29	0.1	340	239
57	25	25	23	0.1	279	290
58	29	27	23	0.1	287	293
59	80	80	88	0.4	882	862
	643	560	673	3.0	7 523	7 284
6	Manufactured goods classified chiefly by material					
61	16	15	18	0.1	209	175
62	20	13	17	0.1	187	188
63	7	8	5	—	106	73
64	86	77	76	0.3	769	772
65	21	19	20	0.1	238	226
66	45	38	50	0.2	596	536
67	60	48	84	0.4	926	627
68	908	934	931	4.1	9 913	8 937
69	104	93	85	0.4	954	1 003
	1 267	1 248	1 287	5.7	13 897	12 536
7	Machinery and transport equipment					
71	90	69	91	0.4	806	848
72	212	156	194	0.9	1 861	1 979
73	13	12	13	0.1	162	140
74	General industrial machinery and equipment, n.e.s. and machine parts, n.e.s.					
	170	156	174	0.8	1 725	1 703
75	114	80	102	0.4	1 059	1 009
76	Telecommunications and sound recording and reproducing apparatus and equipment					
	93	66	98	0.4	921	942
77	Electrical machinery, apparatus and appliances, parts (incl. non electrical counterparts of electrical domestic equip)					
	137	107	134	0.6	1 517	1 357
78	302	169	251	1.1	2 532	2 640
79	122	129	137	0.6	1 402	1 345
	1 255	943	1 192	5.2	11 984	11 963

— nil or rounded to zero (including null cells)

(b) Percent of total merchandise is calculated for the most recent month.

(a) Some SITC sections and divisions exclude commodities subject to a confidentiality restriction. These are included in Division 98. For more information see paragraph 26 of the Explanatory Notes.

	Mar 2013	Apr 2013	May 2013	Percent of total merchandise exports(b)	11 MONTHS ENDED MAY	
					2012	2013
					\$m	\$m
SECTION AND DIVISION OF THE SITC						
8	Miscellaneous manufactured articles					
81	Prefabricated buildings and sanitary, plumbing, heating and lighting fixtures and fittings, n.e.s.					
	18	11	17	0.1	104	152
82	Furniture and parts thereof; bedding, mattresses, mattress supports, cushions and similar stuffed furnishings					
	7	7	8	—	86	78
83	Travel goods, handbags and similar containers					
	3	3	4	—	33	34
84	Articles of apparel and clothing accessories					
	23	21	21	0.1	240	229
85	Footwear					
	6	4	4	—	48	50
87	Professional, scientific and controlling instruments and apparatus, n.e.s.					
	157	136	158	0.7	1 761	1 592
88	Photographic apparatus, equipment and supplies and optical goods, n.e.s., watches and clocks					
	18	21	21	0.1	238	206
89	Miscellaneous manufactured articles, n.e.s.					
	181	187	171	0.7	2 430	1 953
	<i>Total Miscellaneous manufactured articles</i>					
	412	389	403	1.8	4 941	4 293
9	Commodities and transactions not classified elsewhere in the SITC					
93	Special transactions and commodities not classified according to kind					
	77	70	77	0.3	1 101	786
95	Gold coin whether or not legal tender, and other coin being legal tender					
	49	158	100	0.4	785	900
96	Coin (excl. gold coin) not being legal tender					
	—	—	—	—	—	1
97	Gold, non-monetary (excl. gold ores and concentrates)					
	1 119	1 149	1 342	5.9	14 164	14 161
98	Combined confidential items excluding some of SITC 28099 (exports only) and some of SITC 51099 (imports only)					
	505	450	482	2.1	5 686	4 940
	<i>Total Commodities and transactions not classified elsewhere in the SITC</i>					
	1 751	1 826	2 001	8.8	21 736	20 788
Total merchandise exports						
	21 367	20 770	22 750	100.0	241 664	225 335
Balance of Payments Adjustments						
	120	126	134	. .	1 027	1 497
Goods Credits (exports) on a Balance of Payments Basis						
	21 487	20 896	22 884	. .	242 691	226 832

. . not applicable
 — nil or rounded to zero (including null cells)

(a) Some SITC sections and divisions exclude commodities subject to a confidentiality restriction. These are included in Division 98. For more information see paragraph 26 of the Explanatory Notes.

(b) Percent of total merchandise is calculated for the most recent month.

		Mar	Apr	May	Percentage of total merchandise imports(b)	11 MONTHS ENDED MAY	
		2013	2013	2013		2012	2013
		\$m	\$m	\$m	%	\$m	\$m
MAJOR COMMODITIES (c)							
333	Crude petroleum oils	1 700	1 517	1 660	8.3	19 292	18 789
334	Refined petroleum oils	1 299	1 565	1 655	8.2	14 361	15 528
542	Medicaments	730	577	750	3.7	7 847	7 393
625	Rubber tyres, treads, flaps and inner tubes for wheels	227	253	247	1.2	2 655	2 750
723	Civil engineering and contractors' plant and equipment	258	308	347	1.7	6 127	4 328
752	Automatic data processing machines	511	503	554	2.8	6 131	6 015
764	Telecommunications equipment	676	699	760	3.8	7 938	8 172
781	Motor cars for the transport of persons	1 491	1 419	1 423	7.1	14 421	15 774
782	Motor vehicles for the transport of goods	538	530	533	2.6	6 844	7 135
784	Parts and accessories of the motor vehicles	218	202	251	1.3	2 571	2 606
821	Furniture, bedding, mattresses and supports, and stuffed furnishings	162	227	260	1.3	2 669	2 721
874	Measuring, checking, analysing and controlling instruments and apparatus, n.e.s.	217	212	227	1.1	2 584	2 482
971	Gold, non-monetary	367	434	419	2.1	6 345	4 820
SECTION AND DIVISION OF THE SITC							
0	Food and live animals						
00	Live animals other than fish, crustaceans, molluscs and aquatic invertebrates	9	6	4	—	92	84
01	Meat and meat preparations	58	57	57	0.3	542	605
02	Dairy products and birds' eggs	57	56	62	0.3	656	597
03	Fish (not marine mammals), crustaceans, molluscs and aquatic invertebrates, and preparations thereof	112	113	112	0.6	1 272	1 334
04	Cereals and cereal preparations	66	67	74	0.4	755	828
05	Vegetables and fruit	142	135	147	0.7	1 765	1 664
06	Sugars, sugar preparations and honey	25	25	29	0.1	333	316
07	Coffee, tea, cocoa, spices, and manufactures thereof	112	102	114	0.6	1 272	1 253
08	Feeding stuff for animals (excl. unmilled cereals)	48	30	58	0.3	503	613
09	Miscellaneous edible products and preparations	172	145	172	0.9	1 621	1 770
	<i>Total Food and live animals</i>	<i>800</i>	<i>737</i>	<i>830</i>	<i>4.1</i>	<i>8 811</i>	<i>9 063</i>
1	Beverages and tobacco						
11	Beverages	136	136	130	0.6	1 523	1 649
12	Tobacco and tobacco manufactures	28	32	34	0.2	239	314
	<i>Total Beverages and tobacco</i>	<i>164</i>	<i>168</i>	<i>164</i>	<i>0.8</i>	<i>1 762</i>	<i>1 963</i>
2	Crude materials, inedible, except fuels						
21	Hides, skins and furskins, raw	—	—	1	—	3	3
22	Oil-seeds and oleaginous fruits	7	5	6	—	48	58
23	Crude rubber (incl. synthetic and reclaimed)	7	8	10	—	139	98
24	Cork and wood	48	49	54	0.3	622	568
25	Pulp and waste paper	14	10	14	0.1	152	144
26	Textile fibres and their wastes (not manufactured into yarn or fabric)	7	8	8	—	91	82
27	Crude fertilizers (excl. those of Division 56) and crude minerals (excl. coal, petroleum and precious stones)	28	28	30	0.1	271	322
28	Metalliferous ores and metal scrap	7	60	85	0.4	846	653
29	Crude animal and vegetable materials, n.e.s.	34	39	33	0.2	345	381
	<i>Total Crude materials, inedible, except fuels</i>	<i>152</i>	<i>208</i>	<i>241</i>	<i>1.2</i>	<i>2 517</i>	<i>2 309</i>
3	Mineral fuels, lubricants and related materials						
32	Coal, coke and briquettes	1	3	1	—	40	22
33	Petroleum, petroleum products and related materials	3 083	3 134	3 389	16.9	34 378	35 006
34	Gas, natural and manufactured	235	220	256	1.3	2 584	2 568
	<i>Total Mineral fuels, lubricants and related materials</i>	<i>3 318</i>	<i>3 357</i>	<i>3 646</i>	<i>18.1</i>	<i>37 001</i>	<i>37 596</i>

— nil or rounded to zero (including null cells)

(a) Some SITC sections and divisions exclude commodities subject to a confidentiality restriction. These are included in Division 98. For more information see paragraph 26 of the Explanatory Notes.

(b) Percent of total merchandise is calculated for the most recent month.

(c) The 'Major commodities' section lists commodities at the SITC Rev 4 3-digit level which are the most significant (by value) or are of particular interest. Abbreviated descriptors have been used. The list of 'Major commodities' is reviewed annually.

	Mar 2013	Apr 2013	May 2013	Percentage of total merchandise imports(b)	11 MONTHS ENDED MAY	
					2012	2013
					\$m	\$m
SECTION AND DIVISION OF THE SITC						
4	Animal and vegetable oils, fats and waxes					
41	3	4	7	—	42	57
42	25	38	26	0.1	402	367
43	Fats and oils (processed), waxes and inedible mixtures or preparations, of animal or vegetable n.e.s.					
	4	5	3	—	64	65
	<i>Total Animal and vegetable oils, fats and waxes</i>					
	32	47	37	0.2	508	488
5	Chemicals and related products, n.e.s.					
51	177	179	163	0.8	2 672	2 363
52	102	103	98	0.5	1 458	1 502
53	48	47	53	0.3	580	564
54	922	810	969	4.8	9 841	9 661
55	Essential oils and resinoids and perfume materials; toilet, polishing and cleansing preparations					
	169	157	167	0.8	1 732	1 890
56	190	204	185	0.9	1 556	1 495
57	127	130	146	0.7	1 480	1 407
58	104	116	123	0.6	1 319	1 348
59	177	178	227	1.1	1 997	2 092
	<i>Total Chemicals and related products, n.e.s.</i>					
	2 018	1 922	2 132	10.6	22 636	22 322
6	Manufactured goods classified chiefly by material					
61	11	12	10	0.1	137	129
62	302	320	320	1.6	3 537	3 552
63	66	60	69	0.3	724	747
64	Paper, paperboard and articles of paper pulp, of paper or of paperboard					
	201	188	214	1.1	2 360	2 407
65	Textile yarn, fabrics, made-up articles n.e.s., and related products					
	175	205	218	1.1	2 302	2 326
66	189	181	221	1.1	2 214	2 217
67	325	267	348	1.7	3 540	3 628
68	149	208	221	1.1	2 924	2 380
69	603	488	654	3.3	5 844	6 619
	<i>Total Manufactured goods classified chiefly by material</i>					
	2 019	1 929	2 277	11.3	23 582	24 005
7	Machinery and transport equipment					
71	388	349	399	2.0	4 516	4 242
72	527	608	699	3.5	10 460	8 372
73	41	47	41	0.2	653	572
74	General industrial machinery and equipment, n.e.s., and machine parts, n.e.s.					
	1 048	1 072	1 061	5.3	10 445	11 855
75	675	695	763	3.8	8 525	8 116
76	Telecommunications and sound recording and reproducing apparatus and equipment					
	809	874	1 016	5.1	10 706	10 563
77	Electrical machinery, apparatus, appliances, parts (incl. non-elec. counterparts of electrical domestic equip)					
	925	917	969	4.8	10 064	10 156
78	2 383	2 299	2 366	11.8	25 607	27 394
79	189	246	260	1.3	3 235	3 391
	<i>Total Machinery and transport equipment</i>					
	6 985	7 108	7 575	37.7	84 210	84 659

— nil or rounded to zero (including null cells)

(b) Percent of total merchandise is calculated for the most recent month.

(a) Some SITC sections and divisions exclude commodities subject to a confidentiality restriction. These are included in Division 98. For more information see paragraph 26 of the Explanatory Notes.

	Mar 2013	Apr 2013	May 2013	Percentage of total merchandise imports(b)	11 MONTHS ENDED MAY	
					2012	2013
					\$m	\$m
SECTION AND DIVISION OF THE SITC						
8	Miscellaneous manufactured articles					
81	Prefabricated buildings; sanitary, plumbing, heating and lighting fixtures and fittings, n.e.s.	77	106	116	0.6	1 206 1 260
82	Furniture, parts thereof; bedding, mattresses, mattress supports, cushions and similar stuffed furnishings	162	227	260	1.3	2 669 2 721
83	Travel goods, handbags and similar containers	54	67	79	0.4	794 899
84	Articles of apparel and clothing accessories	411	494	460	2.3	5 345 5 621
85	Footwear	97	99	104	0.5	1 302 1 388
87	Professional, scientific and controlling instruments and apparatus, n.e.s.	405	404	423	2.1	4 601 4 591
88	Photographic apparatus, equipment and supplies and optical goods, n.e.s., watches and clocks	102	105	118	0.6	1 289 1 323
89	Miscellaneous manufactured articles, n.e.s.	712	719	888	4.4	9 329 9 234
	<i>Total Miscellaneous manufactured articles</i>	2 020	2 222	2 447	12.2	26 535 27 038
9	Commodities and transactions not classified elsewhere in the SITC					
93	Special transactions and commodities not classified according to kind	1	1	1	—	42 34
95	Gold coin whether or not legal tender, and other coin being legal tender	5	6	7	—	28 50
96	Coin (excl. gold coin) not being legal tender	—	1	—	—	6 6
97	Gold, non-monetary (excl. gold ores and concentrates)	367	434	419	2.1	6 345 4 820
98	Combined confidential items excluding some of SITC 28099 (exports only) and some of SITC 51099 (imports only)	178	484	330	1.6	6 084 4 063
	<i>Total Commodities and transactions not classified elsewhere in the SITC</i>	550	926	758	3.8	12 505 8 973
	Total merchandise imports	18 059	18 623	20 106	100.0	220 067 218 416
	Balance of Payments Adjustments	620	936	573	. .	10 154 9 053
	Goods Debits (imports) on a Balance of Payments Basis	18 679	19 559	20 679	. .	230 221 227 469

. . not applicable
— nil or rounded to zero (including null cells)

(a) Some SITC sections and divisions exclude commodities subject to a confidentiality restriction. These are included in Division 98. For more information see paragraph 26 of the Explanatory Notes.
(b) Percent of total merchandise is calculated for the most recent month.

	EXPORTS				IMPORTS(b)				BALANCE OF MERCHANDISE TRADE	
	2011-12	May	11	11	2011-12	May	11	11	2011-12	11
		2013	ended	ended		ended	ended	ended		ended
	\$m	\$m	\$m	\$m	\$m	\$m	\$m	\$m	\$m	\$m
Belgium	1 697	73	1 588	1 375	1 713	137	1 566	1 455	-16	-80
Brazil	1 294	75	1 216	676	722	50	670	519	572	158
Canada	1 579	130	1 444	1 478	2 038	164	1 844	2 007	-459	-529
China	76 766	8 104	69 474	70 609	43 405	3 819	39 888	41 090	33 362	29 519
Denmark	170	9	162	184	1 200	69	1 101	827	-1 029	-643
Egypt(c)	538	39	501	482	37	2	35	57	501	425
Fiji	303	28	284	279	187	16	173	155	116	124
Finland	268	3	265	141	973	69	901	789	-706	-648
France	1 146	104	1 019	1 111	3 806	392	3 506	3 578	-2 660	-2 467
Germany	2 118	106	1 962	1 782	11 156	969	10 176	10 067	-9 038	-8 285
Hong Kong (SAR of China)	2 839	226	2 650	2 252	1 132	111	1 047	1 150	1 708	1 102
India	13 120	1 082	12 149	10 606	2 494	183	2 317	2 200	10 626	8 406
Indonesia	5 284	487	4 776	4 352	6 204	575	5 563	5 662	-920	-1 310
Iran	206	20	191	514	63	2	61	25	142	489
Iraq	172	95	156	540	—	—	—	—	172	540
Ireland	85	7	78	67	1 923	127	1 796	1 380	-1 838	-1 313
Israel	253	35	234	206	654	58	595	607	-400	-401
Italy	1 143	88	1 080	660	5 223	501	4 768	5 141	-4 079	-4 481
Japan	51 152	4 146	46 830	42 445	20 296	1 737	18 554	16 800	30 857	25 645
Korea, Republic of	21 980	1 658	20 182	17 501	8 992	811	8 321	8 505	12 988	8 996
Kuwait	579	47	472	466	465	55	452	450	114	17
Malaysia	5 075	468	4 652	4 709	9 149	614	8 295	8 126	-4 073	-3 416
Mexico	1 027	54	966	606	1 877	176	1 737	1 960	-850	-1 354
Netherlands	3 533	157	3 348	2 304	1 801	145	1 654	1 672	1 732	632
New Zealand	7 669	610	7 064	6 676	7 505	647	6 837	6 542	164	134
Pakistan	529	68	440	612	177	17	165	166	352	447
Papua New Guinea	2 461	257	2 245	2 623	3 511	199	3 208	2 753	-1 050	-130
Philippines	1 542	74	1 420	1 578	453	51	412	480	1 089	1 098
Saudi Arabia	1 701	217	1 538	1 794	451	38	422	364	1 250	1 430
Singapore	6 559	555	6 015	6 097	14 869	1 051	13 692	13 433	-8 310	-7 336
South Africa	1 708	120	1 608	1 277	824	61	755	789	884	488
Spain	848	49	782	440	2 176	214	1 988	2 740	-1 329	-2 300
Sweden	388	29	338	239	2 519	189	2 322	2 135	-2 131	-1 896
Switzerland	792	100	752	587	3 056	291	2 845	2 644	-2 264	-2 057
Taiwan	8 689	562	7 968	6 956	3 863	317	3 553	3 441	4 826	3 516
Thailand	5 711	289	5 357	4 673	8 644	861	7 674	10 220	-2 933	-5 547
Turkey	679	34	596	550	469	40	430	515	210	34
United Arab Emirates	2 218	210	2 044	2 091	3 729	273	3 526	3 059	-1 510	-969
United Kingdom	8 009	345	7 393	5 044	6 918	529	6 398	5 930	1 090	-885
United States of America	9 850	848	9 051	8 317	27 492	1 997	25 134	23 746	-17 642	-15 430
Viet Nam	2 036	186	1 884	1 636	2 839	373	2 516	3 255	-803	-1 619
Other Countries(b)	10 308	955	9 492	8 798	24 946	2 175	23 172	21 981	-14 639	-13 183
Total	264 027	22 750	241 664	225 335	239 951	20 106	220 067	218 416	24 075	6 919
APEC	211 848	18 762	193 485	183 589	166 573	13 900	152 330	153 083	45 275	30 506
ASEAN	26 383	2 077	24 265	23 227	43 573	3 634	39 472	42 287	-17 190	-19 060
Developing Countries	168 061	15 564	153 388	148 400	126 387	10 949	115 870	119 920	41 675	28 480
Least Developed Countries	2 250	282	2 063	2 210	611	62	554	730	1 639	1 480
European Union(d)	19 833	995	18 415	13 808	42 341	3 672	38 849	38 572	-22 508	-24 765
OECD	115 451	8 634	106 120	92 460	116 631	9 777	106 911	104 168	-1 180	-11 708

— nil or rounded to zero (including null cells)

(a) See Time series spreadsheets for details of all countries.

(b) From September 2008 imports data with confidentiality restrictions 'no commodity details' or 'no value details' are included in Other countries.

(c) Exports of Alumina are excluded from the country total and included in the 'Other Countries' category up to December 2012.

(d) The European Union includes 27 member countries for all periods.

	2011-12	May 2013	11 MONTHS ENDED MAY	
			2012	2013
	\$m	\$m	\$m	\$m
EXPONENTS (a)				
New South Wales	40 540	3 209	37 155	33 801
Victoria	21 596	2 132	19 670	19 714
Queensland	52 868	4 114	48 676	40 439
South Australia	11 410	938	10 514	9 691
Western Australia	120 534	10 838	110 100	106 217
Tasmania	3 170	278	2 905	2 815
Northern Territory	5 278	556	4 750	5 428
Australian Capital Territory	12	—	8	7
State not available for publication(b)	513	—	468	172
Re-exports	8 104	684	7 417	7 050
Total	264 027	22 750	241 664	225 335
IMPORTS				
New South Wales	86 357	7 285	78 983	77 937
Victoria	59 621	5 218	54 727	54 025
Queensland	39 810	3 367	36 434	39 378
South Australia	7 261	610	6 620	6 470
Western Australia	35 081	2 830	32 275	31 138
Tasmania	935	68	885	652
Northern Territory	4 155	397	4 040	4 743
Australian Capital Territory	23	1	19	10
State not available for publication(c)	6 709	330	6 084	4 063
Total	239 951	20 106	220 067	218 416

— nil or rounded to zero (including null cells)

(a) State in which the final stage of production or manufacture occurs.

(b) Exports of Alumina to Bahrain, Egypt and Iceland are excluded from the state totals and included in 'State not available for publication' up to December 2012.

(c) From September 2008 imports data with confidentiality restrictions 'no commodity details' or 'no value details' are included in State not available for publication.

PERIOD AVERAGE EXCHANGE RATES(a), Per Australian dollar

<i>Period</i>	<i>United States dollar</i>	<i>UK pound sterling</i>	<i>Euro</i>	<i>Japanese yen</i>	<i>Special Drawing Right</i>	<i>Trade-weighted index of value of the A\$(b)</i>
FINANCIAL YEAR						
2009-10	0.8830	0.5590	0.6362	80.77	0.5710	68.9
2010-11	0.9891	0.6213	0.7248	82.10	0.6346	74.0
2011-12	1.0319	0.6516	0.7712	81.14	0.6629	76.0
MONTHS						
2012						
March	1.0543	0.6662	0.7977	86.95	0.6842	78.1
April	1.0350	0.6467	0.7858	84.18	0.6706	76.6
May	0.9993	0.6270	0.7794	79.69	0.6521	74.6
June	0.9986	0.6421	0.7959	79.16	0.6590	75.2
July	1.0293	0.6600	0.8368	81.30	0.6829	77.4
August	1.0468	0.6664	0.8447	82.36	0.6922	78.3
September	1.0395	0.6455	0.8085	81.24	0.6766	76.9
October	1.0292	0.6405	0.7937	81.31	0.6681	75.9
November	1.0410	0.6517	0.8110	84.24	0.6807	77.0
December	1.0468	0.6487	0.7985	87.59	0.6805	77.5
2013						
January	1.0503	0.6572	0.7911	93.35	0.6842	78.2
February	1.0319	0.6658	0.7723	96.06	0.6752	77.6
March	1.0333	0.6854	0.7967	97.97	0.6870	78.4
April	1.0387	0.6789	0.7977	101.53	0.6906	78.8
May	0.9920	0.6482	0.7638	99.93	0.6614	75.7

(a) These exchange rates and the trade-weighted index are derived using rates provided by the Reserve Bank of Australia in respect of each trading day.

(b) May 1970 = 100. The Trade-weighted index is reweighted annually on 1 December.

	2009–10	2010–11	2011–12	Nov 2012	Dec 2012	Jan 2013	Feb 2013	Mar 2013	Apr 2013
	\$m	\$m	\$m	\$m	\$m	\$m	\$m	\$m	\$m
BALANCE									
On goods and services	—	—	—	25	-50	-122	-155	-183	30
CREDITS									
Total goods and services	—	—	—	—	-80	-103	-114	-112	-50
<i>Total goods</i>	—	—	—	-11	-99	-122	-120	-72	-90
Rural goods	—	—	—	16	-2	-1	1	-32	-27
Non-rural goods	—	—	—	-27	-96	-122	-122	-40	-63
Net exports of goods under merchandising	—	—	—	—	-1	1	1	1	—
Non-monetary gold	—	—	—	—	—	—	—	-1	—
<i>Total services</i>	—	—	—	11	19	19	6	-40	40
DEBITS									
Total goods and services	—	—	—	25	30	-19	-41	-71	80
<i>Total goods</i>	—	—	—	3	6	23	28	74	-17
Consumption goods	—	—	—	2	1	1	-1	1	4
Capital goods	—	—	—	1	4	2	—	4	7
Intermediate and other merchandise goods	—	—	—	—	1	20	29	69	-28
Non-monetary gold	—	—	—	—	—	—	—	—	—
<i>Total services</i>	—	—	—	22	24	-42	-69	-145	97

— nil or rounded to zero (including null cells)

(a) This table is presented consistent with BPM6 sign conventions. This means for the balance on goods and services a negative revision indicates a decrease in a surplus or an increase in a deficit. For debits a negative revision indicates an increase in debits while a positive revision indicates a decrease in debits.

EXPLANATORY NOTES

INTRODUCTION

1 This publication presents preliminary estimates of Australia's international trade in goods and services on a balance of payments basis (tables 1–11 and 17) and merchandise import and export statistics on an international merchandise trade basis (tables 12–15). In addition, table 16 Exchange rates and trade-weighted indexes (TWI) are derived by using exchange rates and indexes provided by the Reserve Bank of Australia (RBA). As of December 2011 the RBA has changed the methodology for compiling the TWI to include both merchandise and services trade, rather than merchandise trade only. This takes advantage of country-level services trade data that have been published by the Australian Bureau of Statistics (ABS).

2 Merchandise trade statistics on an international merchandise trade basis are compiled from information submitted by exporters and importers or their agents to the Australian Customs and Border Protection Service (Customs and Border Protection). Adjustments for coverage, timing and valuation are made to international merchandise trade data to convert them to a balance of payments basis. The services data are sourced from the quarterly Survey of International Trade in Services and a range of administrative data and indicator series.

3 More comprehensive quarterly estimates of Australia's trade in goods and services, together with comprehensive details of Australia's balance of payments are included in the quarterly publication, *Balance of Payments and International Investment Position, Australia* (cat. no. 5302.0). Detailed monthly statistics on merchandise trade are available in Time Series Spreadsheets on the ABS website or by subscription to tailored services. More information on the *International Trade in Services by Country, by State and by Detailed Services Category* are available on a financial year basis (cat. no. 5368.0.55.003) following the September issue of this publication and calendar year basis (cat. no. 5368.0.55.004) following the March issue of this publication.

CONCEPTS, SOURCES AND METHODS

4 The conceptual framework used in compiling Australia's merchandise trade statistics can be found in *International Merchandise Trade, Australia: Concepts, Sources and Methods, 2001* (cat. no. 5489.0).

5 The conceptual framework used in compiling Australia's balance of payments statistics is based on the International Monetary Fund's *Balance of Payments and International Investment Position Manual, Sixth Edition* (BPM6). Descriptions of the underlying concepts and structure of the balance of payments and the sources, methods and terms used in compiling estimates are presented in the publication *Balance of Payments and International Investment Position, Australia: Concepts, Sources and Methods, 1998* (cat. no. 5331.0). This version reflects the international standards prior to BPM6 and is currently being revised. The first part of the revised document was released on 8 March 2011, featuring only the Goods Account. Other components will be released as they become available. Further information on the key changes introduced with BPM6 can be found in the *Information paper: Implementation of new international statistical standards in the ABS National and International Accounts, September 2009* (cat. no. 5310.0.55.002).

6 To bring merchandise trade statistics on an international merchandise trade basis to a balance of payments basis, timing adjustments are made to ensure that the transaction is recorded in the period in which ownership changed, rather than in the period in which the transaction was recorded by Customs and Border Protection or the period in which the goods arrived in/departed from an Australian port. Adjustments are also made to account for the change of ownership of goods not included in merchandise trade statistics. Chapter 6 of cat. no. 5331.0 provides more detail on the relationship between statistics on an international merchandise trade basis and on a balance of payments basis.

EXPLANATORY NOTES *continued*

CONCEPTS, SOURCES AND METHODS *continued*

7 International merchandise trade exports data presented for recent months in tables 12–15 of this publication are based on information initially reported by exporters to Customs and Border Protection. At the time of initial reporting to Customs and Border Protection the final prices may not be known for some commodities. Therefore, the information recorded for recent months for commodities like iron ore and coal can include a variety of prices including previous or current contract prices and the prevailing spot prices. Newly negotiated contract prices may not be fully reflected in the data first reported to Customs and Border Protection, and to compensate for this, the balance of payments series may reflect adjusted price levels.

8 The Concepts, Sources and Methods publications and information papers are available to download for free from the ABS website. Select *Statistics*, then select *By Catalogue Number*, and then the catalogue numbers as above.

CLASSIFICATIONS

9 The merchandise trade data on an international merchandise trade basis are presented using the following commodity classifications:

- the Harmonized System 2012 (available on request)
- the Standard International Trade Classification (SITC Revision 4)
- the Classification by Broad Economic Categories (BEC)
- the industry classification: Australian and New Zealand Standard Industrial Classification, 2006 (ANZSIC 06) from July 2005.

10 The balance of payments 'goods and services' series are presented according to three classifications with the goods classifications derived from SITC Revision 4 and BEC. The classifications are:

- for goods:
 - the Balance of Payments Commodities for Exports (BoPCE)
 - the Balance of Payments Broad Economic Categories (BoPBEC) for Imports
- for services:
 - the Extended Balance of Payments Services Classification (EBOPS).

ACCURACY, RELIABILITY AND REVISIONS

11 While every effort is made to ensure the accuracy and reliability of estimates, most series are subject to revision as more complete and accurate information becomes available. Care should be exercised in the use and interpretation of estimates in this publication. The transactions occurring in international trade in goods and services are of many different kinds, and therefore the compilation of trade estimates entails the use of a very wide range of statistical data of varying degrees of accuracy and timeliness. For further information on the monthly services series, see paragraph 25.

12 The revisions are applied differently for merchandise trade and balance of payments series. Each month, merchandise trade data are revised for the previous six months to incorporate latest available data.

13 For the balance of payments 'goods and services' series, in original terms, revisions in the July, October, January or April issues are limited to significant new and revised data from survey sources that have become available since the previous issue. This is to ensure the monthly series align with the comparable series in the most recent issue of the *Balance of Payments and International Investment Position, Australia* (cat. no. 5302.0). In the September issue revisions can be applied to the four previous financial years. In other issues revisions can be applied to the previous and current financial years to incorporate the latest available survey and administrative data.

14 In seasonally adjusted and trend terms, revisions may occur at any time point but tend to focus on the most recent estimates. Please also refer to paragraphs 17 and 18 (seasonal adjustment), and 19 (trend estimates) below.

EXPLANATORY NOTES *continued*

SIGN CONVENTION

15 In keeping with BPM6 conventions, balance of payments basis credit entries are shown with an implied positive sign and debit items are shown as negative entries. For statistics on an international merchandise trade basis, both imports and exports are shown without sign. The calculation of percentage changes on balance of payments debit items are made without regard to sign. References to balance of payments debit items in Key Figures, Key Points, and Analysis and Comments are also made without regard to sign.

SEASONALLY ADJUSTED AND TREND ESTIMATES

16 The estimates of international trade in goods and services on a balance of payments basis are seasonally adjusted, however the merchandise exports and imports statistics on an international merchandise trade basis are not. Monthly original estimates are volatile, being subject to calendar-related and large irregular influences. Seasonally adjusted estimates are derived by estimating and removing from the original series systematic calendar related effects, such as seasonal (e.g. Christmas), trading day and moving holiday (e.g. Easter) influences. Seasonal adjustment does not aim to remove the irregular or non-seasonal influences which may be present in any particular month. These irregular influences may reflect both random economic events and difficulties of statistical recording.

17 The seasonally adjusted statistics in this publication use the concurrent seasonal adjustment technique and Autoregressive Integrated Moving Average (ARIMA) modelling to estimate factors for the current and previous months. Under concurrent seasonal adjustment, the estimates of seasonal factors are fine tuned as new or revised original estimates become available each period. The seasonally adjusted estimates are subject to revisions at each reference month as the estimates of seasonal factors are improved.

18 ARIMA modelling relies on the characteristics of the series being analysed to project future period data. ARIMA modelling is used on a case-by-case basis where it results in reduced revisions to seasonally adjusted series when subsequent data becomes available. The projected values are temporary, intermediate values, that are only used internally to improve the estimation of the seasonal factors. The projected data do not affect the original estimates and are discarded at the end of the seasonal adjustment process. The ARIMA model is assessed as part of the annual review and, following the 2012 annual review, the majority of directly seasonally adjusted trade in goods and services time series use an ARIMA model.

19 The month-to-month movements of the seasonally adjusted estimates may not be reliable indicators of underlying behaviour because they include irregular or non-seasonal movements. Trend estimates reduce the effect of these movements as they are derived by applying a 13-term Henderson moving average to the seasonally adjusted series. The 13-term Henderson moving average (like all Henderson averages) is symmetric, but as the end of a time series is approached, asymmetric forms of the average are applied. While the asymmetric weights enable trend estimates for recent months to be produced, it does result in revisions to the estimates for the most recent six months as additional observations become available. Revisions to trend estimates can also occur because of revisions to the original data and as a result of the re-estimation of the seasonal factors. Trend estimates should be used with caution, especially around the time of unusual influences, until these have been appropriately taken into account.

20 Information papers and articles on time series methods are available on the ABS website:

- for seasonal adjustment methods, see *Information Paper: An Introductory Course on Time Series Analysis, Jan 2005* (cat. no. 1346.0.55.001) and *Time Series Analysis Frequently Asked Questions, 2003* (cat. no. 1346.0.55.002)

EXPLANATORY NOTES *continued*

SEASONALLY ADJUSTED AND TREND ESTIMATES *continued*

- for ARIMA modelling, see *Feature article: Use of ARIMA modelling to reduce revisions* in the October 2004 issue of *Australian Economic Indicators* (cat. no. 1350.0)
- for trend estimates methods, see *Information Paper: A Guide to Interpreting Time Series – Monitoring Trends* (cat. no. 1349.0)
- alternatively contact the Assistant Director, Time Series Analysis on (02) 6252 6345 or e-mail: time.series.analysis@abs.gov.au.

ECONOMIC TERRITORY

21 In accordance with BPM6 definitions, Australia's economic territory, on a balance of payments basis, is the area under the effective control of the Australian government. It includes the land area, airspace, territorial waters, including jurisdiction over fishing rights and rights to fuels and minerals. Australian economic territory also includes territorial enclaves in the rest of the world. These are clearly demarcated areas of land, located in other countries and which are owned or rented by the Australian government for diplomatic, military, scientific or other purposes. Specifically, the economic territory of Australia consists of:

- Geographic Australia which includes Cocos (Keeling) Islands and Christmas Island;
- Norfolk Island;
- Australian Antarctic Territory;
- Heard Island and McDonald Islands;
- Territory of Ashmore Reef and Cartier Island;
- Coral Sea Islands;
- Australia's territorial enclaves overseas; and
- the Joint Petroleum Development Area (joint territory between Australia and Timor-Leste).

22 Because of administrative complexities and measurement difficulties, Norfolk Island transactions with the rest of the world will not always be captured in all relevant balance of payments statistics. Most of the transactions involving Norfolk Island are not material to Australia's trade performance and not capturing these transactions will not distort these statistics. However, any significant transactions will be identified and included in the relevant statistics.

COMMODITY BREAKDOWN OF GOODS

23 For details of the classifications used to present goods exports (credits) and imports (debits) on a balance of payments basis, see tables 6.6 and 6.7, respectively, in *Balance of Payments and International Investment Position, Australia: Concepts, Sources and Methods* (cat. no. 5331.0).

24 The international merchandise trade statistics shown in tables 12 and 13 are classified by the Standard International Trade Classification (SITC). Imports and exports of goods at a more detailed level are available from the time series spreadsheets on the ABS website. All data from July 2005 are presented according to SITC Rev 4 and data prior to July 2005 are presented according to SITC Rev 3. For details refer to the 'Classifications and Standards Update' in the July 2008 issue of this publication.

MONTHLY SERVICES SERIES

25 Monthly indicators for many of the services components that are only surveyed quarterly are not available. Monthly estimates for the freight and other transportation components of services credits in table 9 are derived by dividing the quarterly estimate by three. Freight debits are derived directly from imports data for the reference month as a difference between total merchandise cost, insurance and freight (CIF) and free on board (FOB), adjusted to reflect timing and processing adjustments. For freight credits and other transportation credits and debits, estimates are derived by extrapolating the last quarter's data by an average of movements for the same quarter over the three previous years, and then dividing the estimate by three. Similarly other services estimates are derived by extrapolating the last quarter's data by an average of movements for the same quarter over the previous three years, and then dividing the estimate by three.

EXPLANATORY NOTES *continued*

CONFIDENTIALITY OF MERCHANDISE TRADE STATISTICS

26 The release of statistics for certain merchandise trade commodities is restricted in order to prevent the identification of the activities of an individual business, where this is requested by the business concerned. These restrictions do not affect the total value of exports and imports, but they can affect statistics at the country, state and commodity levels. Imports data that have the confidentiality restrictions 'No commodity details' or 'No value details' are aggregated into a single confidential commodity code. For data prior to September 2008, these data are added back into the appropriate state total and country total (i.e. these totals show the correct level of trade). From September 2008 these confidential data are not added back. Instead the confidential data are published as 'No country details' in the country totals and 'State not available for publication' in the state totals. Therefore, country and state totals from September 2008 may not represent the actual amount of trade in each country/state but only the trade in commodities without a 'No commodity details' or 'No value details' restriction. For information on the confidentiality restrictions applied to the merchandise trade statistics in this publication, refer to the current issue of *International Merchandise Trade: Confidential Commodities List (CCL)* (cat. no. 5372.0.55.001).

TOURISM RELATED SERVICES

27 The tourism related services memorandum items provide timely indicators of the movements in tourism related activities, not an absolute measure of the level of these activities. The tourism related indicator has been derived by combining total travel services (business, education-related and other personal travel) and passenger transportation services (which includes agency fees and commissions for air transport).

SERVICES BY STATE AND BY PARTNER COUNTRY

28 Annual services data by state, by country and detailed services are released twice yearly. Calendar year data are usually released following the March issue of this publication and financial year data are usually released following the September issue. Refer to time series data under trade in services data cubes for details.

29 Services credits are classified by the state of provision, while services debits are classified by the state of consumption. The state allocations for transportation, travel, postal and courier, and telecommunication services are based on a number of indicators including merchandise trade statistics by state, overseas passenger arrivals and departures by state of clearance and data provided by the Department of Immigration and Citizenship. The allocation for other services (about 25% of all trade in services) is primarily based on the location of the business reporting the information, which serves as a proxy for the state of provision/consumption of that service. The data should be used with care but are considered suitable for analysis over time.

30 A comprehensive explanation of the data sources used and the methodology applied in the compilation of partner country statistics is provided in Chapter 17 of *Balance of Payments and International Investment Position, Australia: Concepts, Sources and Methods* (cat. no. 5331.0). Approximately 5% of total services credits and debits for both 2009–10 and 2010–11 were either confidential, or unable to be allocated to individual countries.

ABS DATA AVAILABLE

31 More detailed balance of payments and international merchandise trade data, including forward seasonal factors are available as time series spreadsheets or data cubes from the ABS website. Merchandise trade data by commodity, country and state that are not on the ABS website may be available on request. Inquiries should be made to the National Information and Referral Service as shown on the back of this publication.

RELATED PRODUCTS AND PUBLICATIONS

32 Users may also wish to refer to the following publications which can be downloaded free of charge from the ABS website by using the 'Statistics' tab and selecting the relevant catalogue number:

- *Balance of Payments and International Investment Position, Australia* (cat. no. 5302.0) – issued quarterly

EXPLANATORY NOTES *continued*

RELATED PRODUCTS AND PUBLICATIONS *continued*

- *Balance of Payments – Goods and Services, Preliminary Quarterly Estimates* (cat. no. 5302.0.55.004) – issued quarterly
- *International Merchandise Imports, Australia* (cat. no. 5439.0) – issued monthly
- *International Trade Price Indexes, Australia* (cat. no. 6457.0) – issued quarterly
- *Balance of Payments and International Investment Position, Australia: Concepts, Sources and Methods* (cat. no. 5331.0)
- *Information Paper: Quality of Australian Balance of Payments Statistics* (cat. no. 5342.0)
- *International Merchandise Trade, Australia: Concepts, Sources and Methods* (cat. no. 5489.0)
- *A Guide to Australian Balance of Payments and International Investment Position Statistics* (cat. no. 5362.0.55.001).

33 Current publications and other products released by the ABS are available from the 'Statistics' tab on the ABS website. The ABS also issues a daily *Release Advice* on the website which details products to be released in the week ahead. A *foreign trade theme page* and a *balance of payments theme page* are available on the ABS website. Select *Topics @ a Glance – Economy – Foreign Trade* or *Balance of Payments*. This page provides direct links to all foreign trade and balance of payments related data and publications, recent changes and forthcoming events, links to relevant websites and a range of other information about the Australian International Accounts.

ROUNDING

34 Where figures have been rounded, discrepancies may occur between sums of the component items and totals. Percentage movements are calculated from data at the level of precision presented in this publication (i.e. \$m) except for international merchandise trade tables.

ABBREVIATIONS

\$b	billion (thousand million) dollars
\$m	million dollars
ABS	Australian Bureau of Statistics
ANZSIC	Australian and New Zealand Standard Industrial Classification
APEC	Asia Pacific Economic Co-operation
ARIMA	autoregressive integrated moving average
ASEAN	Association of South-East Asian Nations
BEC	Classification by Broad Economic Categories
BoPBEC	Balance of Payments Broad Economic Categories
BoPCE	Balance of Payments Commodities for Exports
BPM6	<i>Balance of Payments and International Investment Position Manual, Sixth Edition</i>
c.i.f.	cost, insurance and freight
EBOPS	Extended Balance of Payments Services Classification
f.o.b.	free on board
n.e.s.	not elsewhere specified
n.i.e.	not included elsewhere
OECD	Organisation for Economic Co-operation and Development
SAR	Special Administrative Region
SITC	Standard International Trade Classification

APPENDIX RELATED ARTICLES

<i>Article</i>	<i>Source(a)</i>	<i>Issue / Release</i>
Investment		
Foreign currency exposure	5308.0	Mar qtr 2009
Foreign ownership of equity	5302.0	Sep qtr 2007
Kangaroo bonds	1301.0	2006
Gross external debt	5302.0	Sep qtr 2003
Balance of payments		
International comparison of balance of payments statistics	(b) 5363.0	1998–99
Merchandise trade		
Export and Import Invoice Currencies, June 2012	5368.0	Jun 2012
Characteristics of Australian Exporters, 2011–12	5368.0.55.006	May 2013
100 years of international trade statistics	5368.0	Oct 2007
New methodology for deriving counts of Australian exports	5368.0	Feb 2006
Australia's Importers, 2003–04	5368.0	Nov 2004
Australia's Exporters, 2003–04	5368.0	Oct 2004
Foreign ownership of Australian exporters and importers, 2002–03	5496.0.55.001	Jun 2004
Australia's trade with the USA	5368.0	Mar 2004
Major commodities traded by Australia, 1991 to 2000	(b) 5422.0	Dec qtr 2000
Trade in services		
ABS International Tourism Estimates	5302.0	Dec 2011
Australian outward finance and insurance foreign affiliate trade, 2009–10	5485.0	Jun 2011
International trade in services by partner country, 2006, preliminary	5368.0	Dec 2006
Changes to International trade in services statistics, August 2006	5368.0	Aug 2006
Changes to International trade in services travel statistics	5368.0	Aug 2005
Finance		
Impact of the farm season on Australian production in 2002–03 and 2003–04	1301.0	2005
Recent trends in construction and first home buyers finance	5609.0	Mar 2002
Household sector data in the financial accounts	5232.0	Mar qtr 2002
Technical information		
Amendments to Schedule 4 of Customs Tariff, March 2013	5368.0.55.019	Mar 2013
Changes to AHECC and Customs Tariff, 2012	5368.0.55.017	Dec 2011
Experimental Statistics on International Shipping Container Movements, 2009–10	5368.0.55.018	Sep 2011
Implementation of new international statistical standards in ABS National and International Accounts, September 2009	5310.0.55.002	Oct 2009
Impact of revised international standards on monthly International Trade in Goods and Services, August 2009	5368.0.55.014	Oct 2009
Estimation of Workers' Remittances based on Balance of Payments and International Investment Position Manual, Sixth Edition, September 2009	5302.0.55.003	Aug 2009
Revisions to international standards in quarterly Balance of Payments and International Investment Position statistics from September 2009, 2009	5302.0.55.002	Jul 2009
Changes to International Trade in Goods Statistics – Countries and Ports, July 2009	5368.0.55.013	Jul 2009
Revisions to international standards in monthly international trade in goods and services statistics from August 2009, 2009	5368.0.55.012	Jun 2009
Changes to International Trade in Goods Industry Statistics, July 2009	5368.0.55.011	Dec 2008
Technical note 1 – Income on debt	5302.0	Jun qtr 2008
Technical note 2 – Use of CDI data	5302.0	Jun qtr 2008
Impact of introducing Revision 4 of the Standard International Trade Classification, 2008	5368.0.55.010	May 2008
Changes to international trade statistics July 2008, 2007 to 2008	5368.0.55.009	Jan 2008
Introduction of revised international standards in ABS economic statistics in 2009, 2007	5310.0.55.001	Sep 2007
Changes on 1 January 2007 to Statistical Codes in the AHECC and the Customs Tariff, 2007	1233.0.55.001	Nov 2006
ABS implementation in January 2007 of revisions to international trade classifications, 2007	5368.0.55.005	Jun 2006
Revised treatment of Goods for Processing in Merchandise Trade and Balance of Payments Statistics	5368.0	May 2006
Impact of Customs and ABS changes on import statistics from October 2005	5439.0	Oct 2005
ABS management of the impact of the implementation of the imports component of the New Customs System	5439.0	Aug 2005
Changes to country and port classifications	5368.0	May 2003
Implementation of New Customs Systems	5368.0	Aug 2004
The effect of customs changes on export statistics	5422.0	Jun qtr 2002
Data confidentiality	5422.0	Dec qtr 1999

- (a) In the ABS website home page, select Statistics; By Catalogue Number; and click on the specified catalogue number and issue. Note: in some instances, a particular issue of the publication can be found in the Past & Future Releases page of the catalogue.
- (b) This article can be found in pdf format by referring to the Downloads page of the specified issue of this publication on the ABS website.

FOR MORE INFORMATION . . .

INTERNET **www.abs.gov.au** the ABS website is the best place for data from our publications and information about the ABS.

INFORMATION AND REFERRAL SERVICE

Our consultants can help you access the full range of information published by the ABS that is available free of charge from our website. Information tailored to your needs can also be requested as a 'user pays' service. Specialists are on hand to help you with analytical or methodological advice.

PHONE 1300 135 070

EMAIL client.services@abs.gov.au

FAX 1300 135 211

POST Client Services, ABS, GPO Box 796, Sydney NSW 2001

FREE ACCESS TO STATISTICS

All statistics on the ABS website can be downloaded free of charge.

WEB ADDRESS www.abs.gov.au